



# **The Villager**

**A Magazine for Avening,  
Cherington and Nags Head**

**December 2025  
January 2026**

***[editors@villagermag.online](mailto:editors@villagermag.online)***





*Richard Murray*



*Liane Wheeler*



*Raph Arwas*



*Annabel Crapper*



*We pride ourselves on our personable & professional approach to selling homes using contemporary marketing tailored to your individual needs.*

*As your nearest local estate agent, we offer unrivalled knowledge of the area built up over 30 years proven experience.*

*Pop in and meet the team in our Minchinhampton office.*

3 High Street, Minchinhampton, GL6 9BN  
01453 886334

*Get ahead in your property search,  
follow us on Facebook & Instagram*



# December 2025/January 2026

We start on a sad note, with the village saying goodbye to Glynn Hopkin, landlord of The Bell for many years. Demonstrating what a popular and well-respected man he was, the church was full, with over 300 people coming to say goodbye and pay their respects at the memorial service on 22nd November, and to talk over their memories in The Bell afterwards. Rest in peace, Glynn.

The excitement of Christmas is now fully upon us, with many events for you to enjoy, starting with the FOAS and Playgroup Christmas Fayre on 5th December and the lighting of the Avening Christmas Tree with carols on 7th. Both these events set the scene for Christmas, and this year we have a new initiative as well: festive windows being lit up on 13th December, at least in Rectory Lane and hopefully throughout the village. The traditional carol services will be held in both Cherington and Avening Churches on 14th and there will be the lovely crib service in Avening church on Christmas Eve. Everyone is welcome to all these events. And if you have some good photos of Christmas in Avening, Cherington and Nags Head, please do share them with us.

**Thank you to all our advertisers, contributors, distributors and of course our readers. We wish you all a peaceful Christmas and a happy New Year.**

***The Villager Editors***

## **The Villager Magazine**

**Editors** Jane Archer (07812 137161), Derrick Pierce (07762 702982) and Gill Lelliott (07794 324682)  
**Advertising** **editors@villagemag.online** Gwyneth Simpson 01453 836556  
**Deliveries** Cas Boddam-Whetham 07900 472999  
**Deadline** 18th of each month

**Read online at [www.avening-pc.gov.uk](http://www.avening-pc.gov.uk)**

## **Photographs in The Villager Magazine**

Many thanks to **Jane Whaley** for our seasonal cover photo. Please keep sending us your photographs, especially since all the images will be in colour in the downloadable version of the Magazine.

**[editors@villagemag.online](mailto:editors@villagemag.online)**

*The Editors do not guarantee the accuracy of the information contained in this publication or accept responsibility for errors or omissions or their consequences. Opinions expressed by contributors to this publication are not necessarily those of the Editors.*

# Contacts for the Villages

Amberley, Avening & Cherington Churches Parish Priest	Natalie Jennings	associate @minchchurch.org.uk
Avening & Cherington Churches Reader	Derrick Pierce	01453 835090
Avening Bell Tower Captain	Andrew Lelliott	07726 345516
Avening & Cherington Cricket Club	Secretary: Sarah Smith	07747 588188
Avening Church Churchwardens	Stephanie Hamilton	07796 981308
Avening Church Flower Team	Gill Adams	01453 833175
Avening Church PCC Treasurer	Diane Martin	dianenmartin59@gmail.com
Avening Cinema Club	Sue or Rima	aveningcinemaclub @gmail.com
Avening Community Café	Gill Adams	07826 291759
Avening Community Orchard	aveningcommunityorchard@gmail.com	
Avening Memorial Hall	David Bendall	01453833479
Avening Oil Coordinator	Frances Lindley	fndly4@aol.com
Avening Parish Council Clerk	Shani Baker	07415 039234
Grumbolds Ash with Avening District Councillor	Tony Slater	07793 669930
Avening Playgroup	Angie Heslop	01453 832695
Avening Primary School	Jane Rushton	01453 833191
Avening Silver Band	John Hall	07825405124

Avening Social Club	Derrick Ind	01453 835752
Avening Singers	Derrick Pierce	01453 835090
Avening WI	Liz Knowles	01453 833803
Cherington Village Hall	Sarah MacMahon	07443629780 <a href="mailto:sarahmacmahon10@googlemail.com">sarahmacmahon10@googlemail.com</a>
Cherington Parish Council Clerk	Barbara (Babs) Maloney	Cheringtonparishcouncil@yahoo.co.uk 01285760276
Cherington Church Churchwarden	Helen Di Mauro	07796 937268
Cherington Church Flower Team	Elizabeth Workman	01285 841294
Cherington Church Organist	Elizabeth Workman	01285 841294
Cherington Church PCC Secretary	Elizabeth Workman	01285 841294
Cherington Church PCC Treasurer	Ian Bamber	idbamber@gmail.com
Friends of Avening School	Nicky Dill	01453 833191
Stroud Hospital	Reception	0300 421 8080
Tetbury Hospital		01666 502336

## VILLAGE & AREA WEB SITES

**Avening Parish Council: [www.avening-pc.gov.uk](http://www.avening-pc.gov.uk)**

**Cherington Parish Council: [cheringtonpc.org.uk](http://cheringtonpc.org.uk).**

**Cherington Village: [www.cheringtonvillage.co.uk](http://www.cheringtonvillage.co.uk)**

**Cotswold District Council: [www.cotswold.gov.uk](http://www.cotswold.gov.uk)**

**Facebook: Avening    Instagram: #aveningvillage**

# Gilian's Poem of the Month

## Snowfall

Snow is falling, thick and fast, blowing all around,  
Fat snowflakes swirling, twirling down, and covering the ground.  
Softer than the wind's caress, whiter than new lamb's fleece,  
Silencing the noisy world, bringing calm and peace.  
The heavy weight of falling snow makes fir-tree branches bend,  
But they snuggle gladly under, as it snows on without end.  
It lays a softening, gentle quilt on skeletons of trees,  
Folding gaunt limbs in soft, white snow, carried on the breeze.  
Trees and roads and fences are all lost beneath the drift,  
The landscape smoothed and softened by Nature's wintry gift.....

But pure, white snow turns dirty grey in the distant town,  
And everybody curses it, as it comes tumbling down.  
It's purity soon sullied by the traffic driving by,  
As tired businessmen in cars hoot impatiently.  
And weary housewives in the town, always in a rush,  
Dash in and out of noisy stores, slipping in the slush.  
These jaded men and women are all longing to get home,  
Cosy by their fireside ,sheltered from the storm.  
The snow is just a nuisance here, which they must all survive,  
And they only want it to be gone, out of their busy lives.....

But high on my wintry hilltop I see beauty all around,  
And all I hear is the snowflakes whispering softly down.  
Far below is the farmhouse, tucked in beneath the hill,  
Nestling into the valley, seeking shelter from the chill.  
A cheery Robin by my feet flies up into a tree  
Singing out with all his heart, carolling merrily;  
His feathered breast of rusty red is throbbing as he sings,  
Filling me with happiness at the message which he brings.  
Suddenly I shout for joy, and leap off down the hill -  
And all the while around me the snow is falling still.....

***Gilian Bulmer-Davison***

# Dates for your Diary

Come along and join in the fun at any of the events below - everyone is always welcome! Both the Memorial Hall & Social Club can also be hired for private functions

Date	Event	Location	Time
Monday 1st December	Public meeting to discuss local housing proposals	Tetbury Goods Shed	7pm
Friday 5th December	FOAS & Playgroup Christmas Fayre	Avening Memorial Hall	2.45-6pm
Sunday 7th December	Lighting Avening's Christmas Tree and Singing carols	The Green, by the Old Bakery	5pm
(From) Saturday 13th December	Festive Window light up	Avening	
Sunday 14th December	Christmas Carol Service	St. Nicholas Church Cherington	5pm
Sunday 14th December	Christmas Carol Service	Holy Cross church Avening	7pm
Wednesday January 28th	Avening Film Club	Avening Memorial Hall	7 for 7.30pm

## Puzzle Corner

### Sudoku

Fill in the blank squares so that each row, each column and each 3-by-3 block contain all of the digits 1 - 9.

If you use logic you can solve the puzzle without guesswork.

**Answers on page 38**

7				1	9	2	3	6
				4			9	
2			5			1		
		8	4	9				
4	9	2	6		8	5	7	1
				2	1	4		
		7			4			3
	2			6				
3	5	6	2	8				4

# Avening and Cherington Churches



As we step into December, you can almost feel the world holding its breath. Fairy lights appear in windows, cards begin to drop through letterboxes, and someone somewhere has already burned their first batch of mince pies (no judgement — it's practically a seasonal tradition). The fields grow quieter, the evenings darker, yet something glimmers in the midst of it all: that familiar sense of anticipation that belongs to Advent.

Advent is often described as a time of waiting, but it's not passive waiting — more like the kind of waiting you do when you know guests are on their way. You tidy up a little, you fluff the cushions, you panic briefly about whether you have enough milk, and then you take a breath and remember that what really matters is simply being ready to welcome. In our worship, we take that breath too: we make space for the extraordinary possibility that God might draw close again, in ways both gentle and surprising.

Christmas, of course, throws all that gentle anticipation straight into joyful, glorious chaos — and I for one wouldn't have it any other way. Our churches are at their most beautiful in this season, and I'd love for you to join us as we celebrate together.

Our Carol Services this year are both on Saturday 14th December:

Cherington at 5pm and Avening at 7pm

Come ready to sing — loudly, beautifully, or enthusiastically... all equally welcome.

On Christmas Eve at 4.30pm, we gather in Avening for the Crib Service, our annual celebration of small shepherds, slightly wonky halos, and the retelling of the greatest story ever told. Whether you come with children, grandchildren, or just a childlike sense of wonder, it's always a real joy.

Later that evening, at 10pm in Cherington, we mark the mystery and stillness of the night with Midnight Mass — though in true country-parish fashion, it's "midnight" with a helpful head start. There is something about stepping out into the quiet afterwards, hearing only the crunch of the cold ground and perhaps an owl in the distance, that speaks of peace in a way few other services can.

And then comes January: the decorations come down, the biscuits are finished (mercifully), and life settles back into its ordinary rhythms. Yet the message of Christmas lingers — that light shines in the darkness, and the darkness cannot overcome it. My hope and prayer is that this light will guide you gently into the year ahead.

Wishing you a peaceful Advent, a joyful Christmas, and a hopeful New Year.

**Natalie**



## Donations to Avening Church

Donations towards the upkeep and running of Avening Church can be made at any time either by using the QR code here or on the card machine just inside the church door.



## Church Services

	Avening	Cherington
Sunday 7 <sup>th</sup> December	10am – Morning Prayer	10am – Holy Communion
Sunday 14th December	7pm Carol Service	5pm Carol Service
Sunday 21st December		10am – Holy Communion
Christmas Eve	4.30pm Crib Service	10pm Midnight Mass
Christmas Day	10 am Family Communion Service	10am Family Service
Sunday 28th December	10am Benefice Service (Holy Communion ) at Holy Trinity Minchinhampton	
Sunday 4th January	10am – Morning Prayer	10am – Holy Communion
Sunday 11th January	10am – Holy Communion	
Sunday 18th January		10am – Holy Communion
Sunday 25th January	10am – Holy Communion	
Sunday 1st February	10am – Morning Prayer	10am – Holy Communion

## Church Floodlighting



The church was floodlit on the following occasion recently:

### Monday 27 October

In memory of **Glynn** our amazing landlord at The Bell for so many years. Thank you and we will fondly remember you.  
With love from the whole village.

And will be lit on:

### Wednesday 10 December

In loving memory of **Hilary Ashcroft**, from Adrian and Carolyn, Finn and Raven.

### Friday 19 December

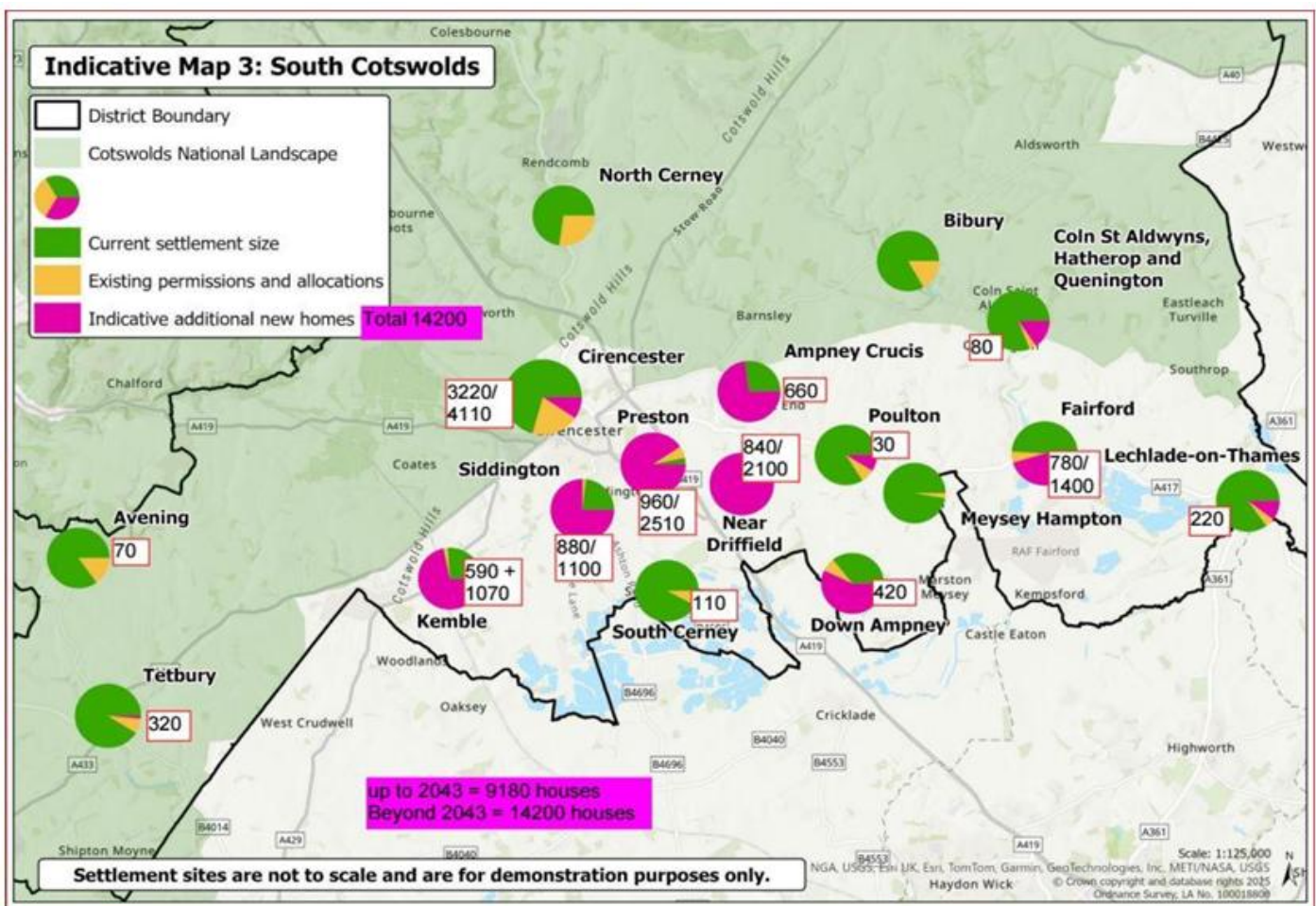
In memory of **Jim Hill**, much missed.

The church looks beautiful at night when floodlit. If you would like to have this in memory of a loved one, or to celebrate a special event, contact **Nicholas Winkfield** on **07885 139275**. The cost is £10 for 2 hours.

# District Councillor's Report



**Cotswold District Council (CDC):** The new Local Plan is arguably the most significant document in CDC's history. It attempts to make sense of the Labour Government's top-down target for housebuilding in the Cotswolds. In short, we are legally obliged to build in excess of 18,600 houses in the next 18 years (we currently have around 42,000 homes in the district), and many thousands more in the years following. 80% of the district is the highly protected Cotswold National Landscape, and taking out other unsuitable areas, these houses need to be built on 16% of what's left, and with many of these areas south of Cirencester we have to absorb over 9,000 houses, with up to 14,200 beyond 2043!



We obviously don't have the infrastructure to cater for this expansion (Cirencester hospital is actually REDUCING its services), and it will change the Cotswolds beyond recognition. It would also fail in the goal of making the Cotswolds more affordable, as the prices in protected areas would soar even higher! CDC is united in fighting the government against these targets, but we need your help.

The Local Plan will be out for consultation in a couple of weeks until early January, so please respond to it as individuals and Parish Councils – I will publicise the links to councils and on Facebook. PLEASE HELP TO PROTECT THE COTSWOLDS!

**Councillor Tony Slater**

Cotswold District Council, Representing Grumbolds Ash with Aveing.  
email: [Tony.slater@cotswold.gov.uk](mailto:Tony.slater@cotswold.gov.uk) Tel: 07793669930



**Cobalt**  
Medical Charity  
Diagnosis • Research • Education



## Let's Make This Christmas Count with Cobalt

Get December off to a flying start by joining Cobalt's brand-new **Reindeer Run on Sunday 7 December!** Whether you walk, jog, prance, or full-on gallop, it's a brilliant way to welcome the festive season. Fancy dress is optional, but every participant receives a pair of antlers and a special Cobalt mug. Sign up early to catch the early-bird discount and do something fun that really makes a difference.

From **2–9 December**, Cobalt is taking part in **The Big Give Christmas Challenge**, the UK's biggest match-funding event. For one week only, every donation is *doubled*, helping Cobalt reach their £37,000 target to support local dementia trials.

And after Christmas, the giving continues with **The Big Sort (29 December–15 January)**. Donate your used Christmas cards at Thirlestaine Breast Clinic and volunteers will recycle them into brand-new cards for 2026.

To learn more, visit Cobalt's website, <https://www.cobalthhealth.co.uk/support-us/>, call 01242 535922, or email [fundraising@cobalthhealth.co.uk](mailto:fundraising@cobalthhealth.co.uk).

### **NAILSWORTH ACCOUNTANCY**

#### ACCOUNTANCY SERVICES FOR SELF EMPLOYED AND LIMITED COMPANIES

Self-Assessment Tax Returns  
Accounts Preparation For Small Businesses  
Company Accounts  
Business Start Ups & Company Formations  
VAT Returns and Tax Planning

For a competitive quote telephone Emma

**01453 835050**

**TOWN HALL NAILSWORTH**



# Letter from Chairman of Avening Parish Council



I must start by giving my condolences to all his family following Glynn Hopkin's untimely passing. The Bell having been understandably closed for the past few weeks has underlined how much of a key figure Glynn was in the community. He was always welcoming and friendly to everyone who frequented The Bell, he will be much missed and difficult to replace.

**Draft Proposed South Cotswold Local Plan:** Housing Proposals for The South Cotswolds Local Plans are now up for discussion. The Proposed Cotswold District Council Local Plan has highlighted potential development sites together with expected housing numbers. Full details can be viewed on Project: Preferred options Consultations –have your say / Cotswold District Council. At this stage the plan allows for a total of 73 new houses for Avening. I would refer you to Tony Slater's article in this publication where he has explained in detail the proposed numbers and regional distribution. Whilst the Parish Council will provide a comprehensive response, we strongly encourage residents to submit their views on-line. Alternatively, there will be a public meeting held at The Tetbury Goods Shed on 1st December at 7.00 p.m. Please come along if you are able to attend. Our very own District Councillor Tony Slater will publish an update and his views in the next edition of The Villager (February)

**Local government Re-organisation:** the debate is still ongoing but seems likely that, subject to individual council votes, one unitary authority for Gloucestershire will be the recommendation submitted to Parliament rather than an East- West spilt into two bodies. The final decision rests with the Government and should be announced sometime in the months towards the Summer.

**Traffic lights at Longford's Mill:** Oh! the stress of wondering if they will ever change from red! If you have been lucky and found them on permanently green then well done. At last, the lights are going to receive some attention to ensure they will operate as they should. Nothing more frustrating than being in the queue, when it is obviously a stranger to the area, at the front waiting for the lights to go from red to green. Normal service should resume very soon – stop on red and go on green!

**Playing Field:** The Parish Council have plans in place to renew/replace the benches at the top of the field under the tree canopy, additionally we will be purchasing a few more tables in readiness for the Spring and Summer. A Reminder - Signs will soon be in place to alert users that surveillance cameras are in situ. The aim is to ensure the field is a safe, clean and respected village amenity.

**Christmas & 2026:** Village Christmas Tree – Make a note in your diaries for Sunday 7th December 5.00pm – come along and celebrate the switching on of the lights and have a singalong. Last but not least – On behalf of myself and all the Parish Councillors, I wish everyone a very happy Christmas and hope that the New Year brings you everything you wish for.

**Patrick**

***Patrick Mulligan, Chairman, Avening Parish Council Tel 07713 068436***

# Avening Village CHRISTMAS FAYRE

In support of Avening Primary School and Avening Playgroup

Mulled  
Wine  
and Mince Pies

Festive  
Hot Food  
plus cakes and hot  
& cold drinks

Children's  
**FESTIVE  
FUNLAND**

Games, Challenges and  
Fabulous Prizes!

Christmas  
Shopping

Local Handmade &  
Artisan Goods



**FREE  
ENTRY**

- Santa's Grotto
- Raffle & Tombola
- Jolly Jingles Sweet Stall
- Christmas Crafts
- Face Painting
- Glitter Tattoos
- Festive Hair Braiding
- Children's Choir
- Music and Singing

## FRIDAY 5<sup>TH</sup> DECEMBER

2.45pm to 6pm | Avening Memorial Hall, GL8 8NF

Please note, not all stalls can accept card and phone payments

[www.foas.org.uk](http://www.foas.org.uk) | FOAS Charity Number 1055040 | [foasavening@gmail.com](mailto:foasavening@gmail.com)

[www.aveningplaygroup.co.uk](http://www.aveningplaygroup.co.uk) | Playgroup Charity Number 900618



# New Term 'To Do' List

- Buy new uniform/work wear/shoes
- Pay for school trip
- New work diary
- New books!
- Arrange bus fares

• Laptop? > get necessary equipment!

**ACEEF!\***

\*The Avening Church of England Education Fund have the means to financially support the education of Avening residents up to age 25. To apply for a grant please contact 01453 833016 or email [buchanan.el@gmail.com](mailto:buchanan.el@gmail.com)

Have a look at the new website for the Avening Church of England Education Fund!  
You will find information on the charity and what the grants include (and what is not included). [www.aceef.org.uk](http://www.aceef.org.uk)





# Nailsworth Bowling Club

The Nailsworth Mills Bowling Club recently held their annual presentation evening at the Social Club, and as is customary, several Avening residents collected cups and trophies recognising their successes in the 2025 season.

Tom Beardesell won the Two Wood Singles and was part of the victorious Friday Triples league; Bob Jennings won several trophies, including the Peel Watkins cup; Jane Beardsell was the '6 Counties' champion, and also won as part of the club Triples; Tony Slater won the Men's Drawn Pairs. Special mention also goes to Jane, who was voted

as the Club Member of the year for all her work organising the competitions, events and catering. The trophies were presented by our club Chairman, Paul Stephens



Although the season has finished, there is still plenty going on at the club through the winter – details can be seen on the Avening events calendar, website, and NMBC Facebook page. All are welcome, and you will be sure of a warm welcome!

***Tony Slater***

## A Bite to Eat?

***Afternoon Tea, Christening Party or other social event ?***

**Arranging a Group Lunch,**

Avening WI 'Bite to Eat' scheme may be able to assist with your catering needs.

We can provide and serve a selection of freshly prepared sandwiches, scones and cakes; a fork or finger buffet; or a two course meal.

**For prices and any further details :**

Please telephone Liz on **01453 833803** or e-mail **[lizknowles@hotmail.co.uk](mailto:lizknowles@hotmail.co.uk)**



# Avening WI

A new venture for AWI was a Craft Sharing Day with members sharing their skills and equipment with other members at Cherington Village Hall. The rain was lashing down outside but we were snug inside and had a wonderful time learning new skills and techniques with crafts such as braiding, paper-folding, candle-making, sewing, card-making, tapestry and knitting. We had a delicious Bring and Share lunch and it was so enjoyable to have a relaxed and sociable day, coming away with some lovely crafts and ideas. We have some very talented members and we are hoping to repeat the event with other craft ideas in the future.



Our November Walk was very popular with a perfect day weatherwise to walk along the Tetbury Trail from the Goods Shed to the Trouble House. The path is now in very good condition all the way along and eleven members and three dogs enjoyed the walk and autumn colours. Other members joined us for lunch with some very tasty options, and then seven members walked back to Tetbury.



Our Book Group have been reading *The Women* by Kristen Hannah, a moving story of nurses in the Vietnam War, and are due to discuss the book at the Amberley Café.

At our November meeting our speaker, Sara Gray, gave a very interesting talk about the history of pantomime in England, which arrived from France in the 18th Century and evolved into the shows we know today. At the end, four of our members took part in a



dead-pan interpretation of the Cinderella story, which was hilarious.

We have lots of Christmas Events lined up with theatre trips to see A Christmas Carol at The Barn and a GFWI concert in Cheltenham, a Christmas shopping outing to Burford Garden Centre, a festive meal at The Thames Head and a Christmas Party. Members have not forgotten others at this time of year having generously donated a huge amount of Christmas gifts for the Stroud Women's Refuge and the Food Bank, whilst our Bite to Eat team are catering for a full Christmas Dinner for Beeches Park.

Thank you to all those who braved Storm Claudia to support our quiz recently. Our amazing Shirley came up with another set of challenging questions, helped by her daughter Alison who acted as quizmaster. Thanks to plenty of teams competing and a good raffle we raised an excellent profit of £200 for local charity, Longfield.

Our Programme team have another exciting year of events planned for 2026. If you would like to join us, we always welcome visitors and prospective members. We meet on the second Thursday of each month 7.30pm at the Memorial Hall.

For more information email [aveningwi@gmail.com](mailto:aveningwi@gmail.com) or check out our Facebook page at Avening WI.

*Helen Haiselden*

## AVENINGCINEMA CLUB



There will be no film in December.

The film chosen for January 28th was:

**The Ballad of Wallis Island** (100 mins, cert 12A)

but this selection has not yet been confirmed.

The Cinema Club is held on the last Wednesday of every month , starting at 7.30 in Avening Memorial Hall.

Admission £7

## Specialist 11+ Tuition with Coach House Tutors

**Established in 1990**, Ros and Claire will help your child reach their full potential and feel confident and ready for the Grammar Schools' Entrance Exam. One-to-one tuition online, or in-person in either Oakridge or Nailsworth. Regular Mock exams.

**[www.coachhousetutors.co.uk](http://www.coachhousetutors.co.uk) [www.facebook.com/coachhousetutors](https://www.facebook.com/coachhousetutors)**

**Claire: 01453 834153 Ros: 01285 760320 Email: [learn@coachhousetutors.co.uk](mailto:learn@coachhousetutors.co.uk)**



Cas Boddam-Whetham RCT SIRPA Practitioner

## **Physiotherapist**

### **Craniosacral Therapist**

**50 years experience in the diagnosis, treatment and management of musculoskeletal and stress related chronic pain.**

Pay as you can

Nags Head, Avening

Telephone: 07900472999

Website: [www.casbw.co.uk](http://www.casbw.co.uk)

## **CHORLEY'S AUCTIONEERS**

Cotswolds Heritage since 1862



**Complimentary & Friendly  
Auction Valuations**

Monthly Auctions of Art & Antiques

Probate & Insurance Valuations

Contact us today for your valuation

**Sold for £8,000**

A 20th Century 'toi et moi' diamond ring

01452 344499 | [info@chorleys.com](mailto:info@chorleys.com) | [chorleys.com](http://chorleys.com)

# Painting, Decorating & Garden Services

Painting & decorating • Fixtures & fittings  
Bespoke shelving • House maintenance

---

Lawn mowing • Hedge trimming • Pruning  
Driveway & patio jet washing • Planting  
Landscaping • General garden & pond maintenance



Quality finishing • Creative ideas • Friendly service • Fully insured

Call Sam on 07533 002946 or email [hattlldonically@gmail.com](mailto:hattlldonically@gmail.com)



Custom Envelopes, Packaging,  
Mini Guides, Booklets, Boxes,  
Signs, Labels & Much More...



Supporting the  
  
**WOODLAND**  
TRUST



[www.wheatleyprinters.co.uk](http://www.wheatleyprinters.co.uk) 01453 731001

Units C1 - C5 Phoenix Trading Estate, London Road, Stroud, Glos GL5 2BX





# Friends of Avening School

**Friday, 5th December, 2.45pm – 6pm, Christmas Fayre, Avening Memorial Hall, in support of Avening Primary School and Avening Playgroup.**

Join us for a festive afternoon filled with Christmas shopping, festive refreshments, children's crafts and games, Santa's grotto, raffle, tombola, face painting, hair braiding and plenty of singing and music.

Tickets are also available for our Christmas Hamper Raffle, tickets £1, to be drawn on Monday 15th December. For more information about this or what we do email us at foasavening@gmail.com or see [www.foas.org.uk](http://www.foas.org.uk)



**~ JOHAN OLNER ~**

**~ Avening based Bicycle Mechanic ~  
{ Cytech Technical One and Two qualified }**

**07968 175 208**

**[human.propulsion@yahoo.com](mailto:human.propulsion@yahoo.com)**

**⌋ Servicing and repairs to get you back on two wheels ⌋**



## **Fred Stevens Funeral Directors**

We give immediate attention – 24 hours

Traditional and contemporary styled  
funerals arranged

Individual, flexible approach

Well established, family-owned company with highly  
experienced staff

Newmarket Road, Nailsworth, Gloucestershire GL6 0DQ

telephone 01453 832188

[email@fredstevens.co.uk](mailto:email@fredstevens.co.uk) [www.fredstevens.co.uk](http://www.fredstevens.co.uk)

## Glynn Hopkin

### 1956 - 2025



*This eulogy was written by Glynn's family for his funeral, which took place on 22<sup>nd</sup> November 2025.*

We're here today to remember and celebrate the life of Glynn — a man whose presence filled every room, every conversation, and every pint glass he ever stood beside.

Glynn was born on 29 August 1956 in Goldthorpe to Jean and Geoff; he was the middle one, big brother Kevin up ahead and his sister Cheryl the youngest of three.

Glynn had grown up in pubs, first the Saxon in Kiveton Park, then the Cow and Calf in Grenoside. Geoff, his father, always used to say that at 14 years old he weighed around 14 stone, and could drink about as many pints. He went to grammar school and was the youngest in his school year thanks to his late-August birthday, yet also the biggest and the tallest. It was no surprise he found his way to rugby, his favourite sport. On the pitch and off, he was a gentle giant — kind, helpful, and full of character. Something he

kept up throughout his life. His love of rugby never diminished and always passionately supported England. A sports fan, he would happily watch any game, at any time. Football was Sheffield United (not always easy, but often character-building).

By trade, he was an accountant, meticulous and reliable - if there was a penny hiding it better be afraid because Glynn would find it. Afterwards, just like his Dad before him, his heart always belonged in the pub trade and this is where he felt at home. He became a BDM with Punch and Inspired, earning what he valued most from people: trust. If Glynn said he would do something, he did it. No fuss, no flannel, just straight and honest. He was valued not by chance, but because of the respect he earned, one handshake at a time.

He understood what a communal place needed; good people, a warm welcome, and that sense that you were among friends. He connected people, he facilitated friendship, love and companionship. He was the guy people called when they needed a favour, and with

everyone he met he treated them with respect and kindness... even if secretly may have thought that that person was a bit of a plonker.

Glynn loved life. But he really loved his friends. You would often find them on the golf course, or off on some group adventure and then immediately planning the next one. Be it on a boat, climbing in a cave or hurtling down a zipwire... not bad for an OAP. Always ready. Always keen for an adventure in some form.

And in early 2022, Glynn met and fell in love with his partner Doreen. And quickly a special relationship blossomed. Between their visits to Nailsworth Garden Center, they'd often be dining with friends, or driving around Spain with the top-down like two teenagers, or on the water somewhere with his brother Kevin and sister-in-law Gill, whom he adored spending time with.

Glynn enjoyed life.

Because Glynn's proudest achievement in life was the life of his children and grandchildren. His beloved sons Michael and David, and later his dear daughters Sara and Lucy, were his world. And when he became Grandad to Arlo, Isla, and Wilf, his heart grew even bigger. His favourite thing in life was bringing everyone together with good food, glasses full, laughter echoing, love everywhere.

Glynn's sharp humour was one of his defining features. He always had a terrible joke to hand, a quick quip ready to go, and a grin that told you he knew exactly how bad that joke was. His wit was quick, dry, and perfectly timed.

Glynn was a big character in every sense. Tall and broad, yes, but also generous, and funny.

He was the bloke you could trust, the friend you wanted at your table, the grandad who lit up at the sight of his grandchildren, the dad who made a pub feel like home.

He leaves behind laughter, warmth, and countless stories. So, let's raise a glass to Glynn – a good man, a loyal friend, and a loving dad and grandad.







# Avening School

## Stepping into Christmas

Our Christmas tree is up, the decorations are out of their box and the sound of singing can be heard echoing throughout the school as the children prepare for their Christmas productions. This year, the Eagles and Kestrels will be delighting their audiences with two performances of A Midwife Crisis, while further up the school, the Hawks and Owls will be travelling to Neverland in their performance of Peter Pan.

And the theatricals don't stop there. Towards the end of term, the Eagles and Kestrels will be going to watch Sleeping Beauty at the Wyvern Theatre in Swindon, while the Hawks journey to Bristol Old Vic for a performance of Treasure Island. The Owls class, meanwhile, will have their theatre trip to look forward to after the holidays, when they will go January to the Royal Shakespeare Theatre to watch The BFG.

Since half term break the school has seen a flurry of activity with a Y5 trip to Westonbirt school for a Space Day, a dodgeball tournament at Kingshill School in Cirencester and a non-uniform day to raise funds for Children in Need where pupils were invited to dress up according to their aspired profession. There was a delightful medley of dancers, artists, rock stars, builders, gymnasts to name just a few.

As the year draws to a close, we would like to take this opportunity to thank everyone who supports our school throughout the year, whether it's through attending a FOAS event or donating books, time or other resources. Your continued support enables us to provide our pupils with the best start in their educational journey and a creative, enriching environment in which to learn. We would also like to thank the Avening Church community who, through their education fund, help families within our school community access school trips, music lessons and other enrichment opportunities.

Please join us on Friday 5th December for the FOAS and Avening Playgroup Christmas Fayre in the Memorial Hall from 2.45pm for stalls, refreshments and carols.

We wish you all a very Merry Christmas and a Happy New Year!

**Alex Adcock**

*For more information about this busy place of learning, please see our school website: [www.avening.gloucs.sch.uk](http://www.avening.gloucs.sch.uk)*

## Avening Village Notice Board

The village notice board, on the side of the Memorial Hall, is a good way of publicising village events and items of local information. Posters, ideally size A4 or A5, can be put up for you on this board. They can be delivered to John and Sandra Hetterley, 2, Orchard Field or given to them directly. They will be taken down once they are out of date. Other posters may be removed and recycled once they are faded or to make space for others.



t. 01666 505068

e. [tetbury@hunterfrench.co.uk](mailto:tetbury@hunterfrench.co.uk)

w. [www.hunterfrench.co.uk](http://www.hunterfrench.co.uk)

2 London Road, Tetbury, GL8 8JL



*Are you following us?!*

Tetbury based, independent Estate Agency  
offering a friendly, yet professional and  
reliable service to house selling and  
purchasing.

Experience the Difference...



# ECOPEST

## — PEST CONTROL —

Professional, reliable and effective service

RSPH Level 2 certified

[www.ecopestcontroller.com](http://www.ecopestcontroller.com)

[www.facebook.com/ecopestcontroller](https://www.facebook.com/ecopestcontroller)

[will@ecopestcontroller.com](mailto:will@ecopestcontroller.com) or 07918587473



Pip Morris *interiors* Ltd

07512 661566 - [hello@pipmorris.co.uk](mailto:hello@pipmorris.co.uk)

Planning Applications  
Architectural Design  
Interior Design  
Design Consultancy



[pipmorrisinteriors.co.uk](http://pipmorrisinteriors.co.uk)



# Avening Community Café

Enjoy good company, crafts, delicious home-made cakes and a drink at your Community Café—Every Tuesday morning in the Social Club from 9 – 12 am.

Mobile Post Office on site from 9:30 – 11:30.



There were spooky goings on at the Café at the end of October during half term, with children and adults dressing up to mark Halloween.

On the 18th November we celebrated the Café 7th birthday with a birthday cake thanks to Christine and raising a glass of bubbly to say thank you to all members and volunteers who make the Café a popular place to meet friends, enjoy good coffee and delicious homemade bakes.

We are pleased to sponsor the art class held on the first and third Tuesdays, rag-rugging and welcome others such as “Made in Avening” to the Café. Please let a committee member know if you have any other things you’d like included.

Unfortunately, due to rising costs, from January the price of coffee will increase to £2.00 per

cup and cheese scones to £1.50 – still a good deal compared to elsewhere.

We wish everyone a very happy Christmas.

## December Dates

- 2nd: Art with Mark (£3 each, all materials supplied)
- 9th : Christmas Wreath Making (£3.00)
- 16th: Art with Mark (£3 each, all materials supplied)
- 23rd: Mel’s Christmas Music. Wear something Christmassy! Chocs for children.
- 30th: CLOSED

## January Dates

- 6th: Art with Mark (£3 each, all materials supplied)
- 13th: Normal Cafe
- 20th: Art with Mark (£3 each, all materials supplied)
- 27th: Help us celebrate Burns Night!



**John Hetterley**  
**For Avening Community Café**

## Shaun's Story

Shaun, a single man with long-term health conditions, became homeless following a no-fault eviction. With no local housing available, he was relocated to the Cotswolds.

After a series of benefit cuts, he could no longer afford to run a car and became reliant on limited public transport or costly local shops.

"I was waiting outside the Community Fridge for food so I could take my insulin." At his lowest point, Shaun questioned whether life was worth living. Delays in benefit processing left him unable to afford essentials, prompting him to seek support from the Foodbank.







Through the Foodbank and its funded Citizens Advice service, Shaun accessed help to stabilise his income, complete Personal Independence Payment (PIP) assessments, and secure mobility support.

Although still struggling with high local rents, he began volunteering at the Foodbank, supporting others and helping to challenge stigma around food insecurity.

However, recent announcements about potential changes to disability benefits have triggered renewed anxiety and impacted his mental health: "They make decisions without even talking to those of us it affects the most. I haven't been able to sleep... I'm worried sick. Will I lose my car? Will I have enough to live on?"

**Need support?** Call us on: **0300 1027970** or email us at [\*\*info@cirencester.foodbank.org.uk\*\*](mailto:info@cirencester.foodbank.org.uk)

## Cirencester Foodbank (covering Avening) Summary: April 24 - March 25

 <p>3,517 emergency food parcels provided</p>	 <p>2.5 the average number of food vouchers per household</p>	 <p>91 agencies referring to provide support to their clients</p>
 <p>1,580 food parcels provided for children</p>	 <p>9% reduction on previous year's number of households needing food aid</p>	 <p>37% of clients were people need- ing to use the foodbank for the first time</p>

**Support our work:** There are lots of ways you can help ensure no one in the South Cotswold's faces hunger or hardship alone.

Scan the QR code to make a one-off or monthly donation. Alternatively, visit our website for our bank details: [cirencester.foodbank.org.uk](http://cirencester.foodbank.org.uk)



If you're a UK taxpayer, Gift Aid lets us claim an extra 25p for every £1 you donate, at no extra cost to you, helping your support go even further. This can be done when donating.

# *Nailsworth Domestic Appliance Repairs*

*A reliable, fast & friendly service*

*Washing Machines,*

*Dishwashers,*

*Tumble Dryers,*

*Fridge-Freezers,*

*Electric Cookers . . .*

*No Call - out Charge*

*01453 ~ 833310*

**TONY'S CHARITY QUIZ NIGHTS**

**THE BELL, AVENING**

**1ST SATURDAY OF THE MONTH**

**£2 A PLAYER: A MAXIMUM OF 4 PLAYERS PER TEAM**

**ALL PROCEEDS TO THE COBALT APPEAL, CHELTENHAM**





## **S Woodman Garden Services**



General Gardening  
Grass Cutting ~ Hedge Cutting  
Tree Cutting ~ Fruit Tree Pruning  
General Ground Clearance  
Good Rates / O.A.P Discount

Please Call: Home: 01453 834744 Mobile: 07814206803



Appointments- scan here



**TETBURY CLINIC**  
23 Church Street  
**Tel: 01666 503531**

**NAILSWORTH CLINIC**  
George Street  
**Tel: 01453 705560**

**FOR OUT OF HOURS  
EMERGENCIES CALL US  
Tel: 01666 823165**

## **O.L.Cottle Family Business**

Hand Carved Memorials : Cremation Plaques  
Additional Inscriptions : Renovations and Cleaning

All Types of Stonework

**Tel: 01453 762877**

**36 Slad Road, Stroud, Gloucestershire**



**Hoggy's Christmas Cracker Sale**



**6<sup>th</sup> December 2025**  
**10AM - 4PM**

**Avening Village Hall,**  
**GL8 8NF**

Also joining me:  
 Alice Sheppard Fidler Artworks  
 &  
 Sarah Maingot Ceramics

 **hoggysantiques**  
 07990 970 629

# MINCHINHAMPTON SPORTILY FITNESS HUB

Welcome to our community gym. Join us for feel-good fitness that's all about **fun**, **friendship** and **real results**.

Try **small group classes**, **weightlifting**, **boxercise** and **yoga**, with support from a therapist and nutritionist to boost your wellbeing. Discover a community that cheers you on every step of the way.

**Scan the QR code or head to our website to find out more.**

**Run by Christians. Open to all.**

    
**@sportilyUK**



**Scan me**

**We bring the energy that gets you moving.**  
**Discover activities near you at**  
**sportily.org.uk**

  
**sportily**  
 PLAY SPORTS, TALK LIFE





## Festive Window Displays

Residents in Rectory Lane are planning festive window displays for the run up to Christmas and would like to open it out to the whole village.



*Evening*  
*Festive Windows*

SPREAD THE CHRISTMAS CHEER,  
ONE WINDOW AT A TIME!

*Decorate a window with a festive display for locals to enjoy  
on their winter strolls around our beautiful village. For  
creative ideas check out [www.windowwanderland.com](http://www.windowwanderland.com)*



Windows to be illuminated from **Saturday 13<sup>th</sup> December**. You can  
display it only for the weekend, or until Christmas – you decide!

However, please join us in lighting up your window on Christmas Eve  
for a final special celebration of  
Christmas Cheer!





## DECEMBER HIGHLIGHTS AT TETBURY GOODS SHED

- December 6/7:** Christmas Craft fair: Stock up on Christmas gifts for the whole family and enjoy festive music and delicious treats. 10am-4pm Admission free.
- December 13:** Dickens' A Christmas Carol: Happy Valley actor Vincent Franklin brings Dickens seasonal story to life in an amazing one-man show which will leave your blood chilled and heart warmed. Tickets in Advance £15, family of 4 £45. 7.30pm
- December 18:** Film- The Nutcracker: Ukraine's National Opera Ballet Company bring us this sumptuous staging of Tchaikovsky's perennial Christmas favourite. Tickets in advanced £7.50. 7pm
- December 19:** Community Carol Concert: Traditional carols and modern with the added attraction of mulled wine and mince pies. Admission free. 6pm
- December 20:** Abba Fever: Take a chance on a great pre-Christmas sing-along with family and friends. Abba Fever are known for great musicianship, choreography and authentic costumes. Tickets 27.50 in advance. 7.30pm
- January 2:** Wonder Pantomimes Robin Hood: Join in as Robin and his Merry Men take on the evil Sheriff of Nottingham in this family-friendly event for all ages. Tickets in advance £13.48 adults, £9.70 child, family of 4 £37.73. 2pm and 5.30pm

**For more details of our other events including film, talks, exhibitions, and afternoon tea concerts and to book tickets visit our website:**  
**[www.tetburygoodsshed.co.uk](http://www.tetburygoodsshed.co.uk)**

Every year we take a collection at the Sunday services in Avening church, raising money to buy presents for children who would not otherwise have much at Christmas time. The collection box will be on the table in the church every week for the next few weeks.

Please, if you can, give generously. Some families are finding times are very hard for them



***Elizabeth Buchahan***

# Letter from Roz Savage MP



## Preparing for Winter

Here in the South Cotswolds, we are usually reminded of our relationship with nature most vividly in the warmer months, when we spend more time outdoors and the landscape feels alive with energy and growth. As autumn turns to winter and the leaves begin to fall, that connection can seem to fade. The fields appear quieter, the skies greyer. But of course, there is no “off switch” for nature - it is simply entering another phase of its cycle, resting and renewing for the year ahead.

We too have to adapt. Winter brings its own challenges, not least the risk of flooding, which affects so many towns and villages across our constituency. From Purton to Poulton to Parliament, I have been working hard to ensure our communities are better protected and prepared.

Earlier this month, I convened a Flooding Summit in Cirencester, bringing together local councillors, parish representatives, and community flood groups to share progress and plan practical steps for the months ahead. The discussions were constructive and grounded in real experience - a reminder that while national policy and investment are vital, the most effective solutions often come from those who know their local landscapes best.

In Parliament, I will continue to raise this issue through debates, legislative work, and direct engagement with ministers. But what inspires me most is what I see here at home: neighbours supporting one another, community groups taking the initiative, and volunteers stepping forward to protect their towns and villages from future flooding. The South Cotswolds spirit of collaboration and care is one of our greatest strengths.

That same spirit is at the heart of the Cotswold Volunteer Flood Warden Scheme, run by the Gloucestershire Rural Community Council in partnership with Cotswold District Council. Flood Wardens act as the eyes and ears of their communities - keeping an eye on local watercourses, helping share information, and providing vital updates during a flood event. They receive full training and ongoing support, and their efforts are making a real difference across the district.

If you'd like to get involved, I encourage you to find out more at [www.cotswold.gov.uk/floodwardens](http://www.cotswold.gov.uk/floodwardens) or contact Rachel Seymour at [rachels@grcc.org.uk](mailto:rachels@grcc.org.uk). Even if you're not able to volunteer, there are many ways to help - from checking on vulnerable neighbours to reporting blocked drains or keeping watercourses clear. Small, local actions can add up to real resilience.

As we look ahead to the colder months, I know many people are concerned - about energy bills, weather extremes, or simply the shorter, darker days. But winter also brings an opportunity to reconnect in a different way: through community warmth, shared effort, and kindness. Whether it's lending a hand, joining a local initiative, or just sharing a cup of tea with a neighbour, these small gestures help us all feel stronger and more connected.

Let's face the winter together - with care for one another, for our homes, and for the beautiful landscape we all call home.

Warm wishes,

**Roz**

**Roz Savage MP, South Cotswolds**  
Email: [roz.savage.mp@parliament.uk](mailto:roz.savage.mp@parliament.uk) | Call: 01285 300555



## Recycle Your Tree and help Longfield Hospice - Booking Open Now

Now is the chance to sign up to dispose of your Christmas Tree in the most eco-friendly way possible and raise money for Longfield Community Hospice.

In return for a voluntary donation, Longfield Hospice's team of volunteers will collect your trees from your home at the end of the festive season and take them to be chipped for chippings to be reused locally, making this the most eco-friendly way to dispose of your tree.

Hoping to collect and recycle more trees than ever this year, Longfield in partnership with Just Helping, is aiming to raise more than £85,000, which could help fund over 1,000 hours of Hospice at Home care, or support free wellbeing, bereavement and counselling services for those in Gloucestershire. This is a huge operation for Longfield and last year an army of 180 volunteers collected more than 4000 trees over four days from households throughout Gloucestershire.

The scheme is endorsed by Stroud District Council and Gloucester City Council (working with Ubico) is also supporting the scheme.

To arrange collection of your tree, simply visit [www.just-helping.org.uk/register-tree](http://www.just-helping.org.uk/register-tree) and enter your postcode, where you can make a voluntary donation to your local community hospice. Bookings can be made from 14 November until 6th January 2025

After costs, money raised helps to fund the hospice's vital work supporting patients, families and carers across Gloucestershire.

The fundraising team are also looking for volunteers, vans to collect Christmas trees, and tree chippers from Saturday 10th to Tuesday 13 January 2025. To volunteer either with your time or if you have a van or chipper, then please contact the team on 01483 886868 or email [christmas.trees@longfield.org.uk](mailto:christmas.trees@longfield.org.uk)







# Avening Playgroup

Over the past few weeks, we have been looking at the following topics:

**Halloween** – we looked at the lifecycle of a pumpkin, dug the flesh out of some pumpkins, used apples to print pumpkins and did some pumpkin colourings.

**Diwali** – the children decorated Mendi hands, made some Rangoli chalk patterns and decorated biscuits.

**Bonfire Night** - we made bright firework pictures using toilet rolls that had been cut at end, dipped into paint and sprinkled with glitter. The children also made more firework pictures by flicking paint onto the paper with paint brushes – it was a very messy but fun activity! We also played with the glitter water and made sparkling stars.



**Remembrance Day** – we talked about remembering the soldiers and why we wear poppies. The children drew and coloured in some poppies, and also made poppies out of cake cases and lolly pop sticks.



We have been looking at traditional nursery rhymes, decorating Humpty Dumpty and playing Incy Wincy with the spiders and drain pipe. We will soon be starting to look at Christmas and look forward to making lots of different Christmas crafts.

Our Stay & Play sessions continue during term time and have been well supported. It is a lovely way for parents to meet other parents and for children to interact with others of the same age. It is only £3 (and £1.50 per additional child) and runs between 9.30 and 11.00 am on Thursdays.

During the half term break, our committee organised a Special Halloween Messy Morning, which was lots of fun! The children took part in potion making, ghostly gloop, pumpkin painting, creepy crawly hunting, cauldron bubble art and hunted for spooky treats.

**Don't forget Friday 5th December – the Avening Christmas Fayre**, where the school and playgroup get together to raise much needed funds for the children. The playgroup staff and committee will be dropping off letters through your doors and will come to collect any donations from your doorstep on 3rd December. Please keep an eye open for these letters or you can drop any donations off at the playgroup.

The last day of this term is Friday 19th December and we look forward to welcoming everyone back on Monday 5th January 2026.

The staff, committee, children and the families at Avening Playgroup wish you all a very merry Christmas and a happy New Year.

*Angie Heslop*

If you would like to know more about the playgroup and our Thursday Stay & Play session or to reserve a place for your child, please contact us on 01453 832695 on weekday mornings or email [aveningplaygroup@gmail.com](mailto:aveningplaygroup@gmail.com).

# PETER SAVAGE

**ALL FENCING & GATES SUPPLIED & FITTED  
GROUNDWORKS AND LANDSCAPING UNDERTAKEN  
SEASONED FIREWOOD – LOGS & KINDLING**

**Tel: 01453 833239  
or 07785 788335**

## For Sale

Wheelchair (large wheels} new and used only once £60.

Nursery Fireguard £10.

Please contact Gwyneth on 01453 836556 or  
[gwynsimpson10@gmail.com](mailto:gwynsimpson10@gmail.com)

**shiny Goodness**

**Your local health food store**

**01453 832 986**

**George St, Nailsworth**

**[www.shinygoodness.co.uk](http://www.shinygoodness.co.uk)**

**ECO  
VER**

**FAITH IN NATURE**

**SALT  
OF THE  
EARTH**

**bio<sup>®</sup>**

**Over 60 refill & loose products including milk, nuts & seeds, oats & grains, pasta, orzo, cleaning products & toiletries. Locally sourced eggs & honey.**

**Large range of supplements & Free health advice.**

# Puzzle Answers

7	4	5	8	1	9	2	3	6
6	8	1	3	4	2	7	9	5
2	3	9	5	7	6	1	4	8
1	7	8	4	9	5	3	6	2
4	9	2	6	3	8	5	7	1
5	6	3	7	2	1	4	8	9
8	1	7	9	5	4	6	2	3
9	2	4	1	6	3	8	5	7
3	5	6	2	8	7	9	1	4

**KP GARDENS for Logs & Kindling**  
Est. 1984

**KILN DRIED PREMIUM QUALITY  
FIREWOOD**

☎ 07813 790905 or 01666 503782

- Premium Quality Kiln Dried Hardwood Logs
- Sustainably sourced
- Very clean burning (low smoke)
- Delivered to your door

email: kpgardens@hotmail.co.uk



**JOINERY**  
LIMITED

- Windows
- Doors
- Conservatories
- Bifold Doors
- Stairs

01453 755007

info@gkjoinery.com

gkjoinery.com

## Computer or Tablet Problem? Struggling with Technology?

**Home Visits:** I come to you for your convenience.

**Knowledgeable :** 20 years in business in the Stroud area.

**Tailored Support:** One-on-one help tailored to your needs.

**Easy Learning:** Simple explanations and step-by-step guides.

**Services :** Computer repairs & upgrades

Computer health checkups

Plain speaking tuition

Wi-Fi problems

Advice & Help

Tech support

Easy backup



**Matt Hughes**

**07740 167318**

**£45 ph Est.2003**

**Based in Stroud**

**See my hints & tips  
at pcprop.com**



## Recycling days Christmas '25 and New Year '26

Please note the change to normal recycling days over the festive period.

<b>Food Waste Only</b>	<b>Food Waste, Recycling, Refuse and Gardening</b>
Friday 12th December	Friday 19th December
<b>Monday 29th December</b>	<b>Monday 5th January (no garden waste)</b>
<b>Saturday 10th January</b>	Friday 16th January
Friday 23rd January	Friday 30th January

### Allsorts launches first-ever Santa Dash at Tinkley Gate



Allsorts is a Stroud charity that helps disabled children and their families access everyday experiences that others take for granted, supporting their physical and mental health through opportunities to stay active, have fun, and connect with one another. See [allsortsglos.org.uk/based](https://allsortsglos.org.uk/based)

Allsorts, in partnership with Stroud & District Athletics Club, is inviting the community to pull on their santa suits and take part in the first ever Allsorts Santa Dash on Sunday 7<sup>th</sup> December 2025. The festive event will see up to 250 santas run, walk or wheel their way around the beautiful National Trust setting of Tinkley Gate, Woodchester Park. With 2.5km and 5km routes available, the event is open to all ages and abilities, from seasoned runners to families, children and even festive pooches (on leads!). Highlights include carol singers, a medal for every finisher and post-dash refreshments at the on-site café. Santa suits are available to purchase during registration and chip timing will be provided for those who'd like to track their pace.

All profits raised will support Allsorts, a local charity working to create inclusive opportunities for children and young people with additional needs and their families across Gloucestershire.

Entry: Adults £14–£16, Juniors £11–£14 (discounts applied at checkout)

Registration: <https://bit.ly/46dDX1l>

# Avening Parish Council



## Roads and Footpaths

Please report any issues on the footpaths or the roads, on Fix My Street. This is the quickest way to get highways to send an inspection team <https://fixmystreet.gloucestershire.gov.uk> If it is an emergency please call 08000 514 514.

## Local Plan Consultation

The Cotswold District Council Local Plan has highlighted potential development sites and proposed housing numbers. A public consultation will take place from 14 November to 2 January. The Parish Council will provide a comprehensive response, and residents are strongly encouraged to submit their views.

## Playing Field

Further benches will be installed and damaged seats repaired. Damage to the basketball court was also noted and the jammed zip wire will be repaired.

## Planning Applications & Tree Works Since the Last Issue and Parish Councils Decision

### New Planning Applications

25/03484/TCONR Church Farm Point Road: Acer (T1) - reduce the crown to 6.5m in height above ground level and the radial spread to 3.5m to allow more light into the house. Conifer (T2) - fell to favour the Cotinus next to it. Cypress x 2 (T3 and T4) - fell to favour the yew trees next to them. Acer (T5) - remove the leaning stem to favour the more upright stem. Cypress x 2 (T6 and T7) - fell to favour the adjacent trees. Hazels (G1) - reduce to 3m above ground level. Holly (T8) - reduce to 2.5m above ground level. - No Comment.

### Planning Correspondence and Decisions

25/02373/FUL Brandhouse Farm West End: Erection of single storey side extension to NW elevation with a porch, an open loggia to SE elevation and balcony to rear wing - Permitted

25/01840/COMPLY Old Quarries Rectory Lane: Partial compliance with Conditions 3 (Sample materials), 4 (Sample panel walling), 5 (Sample panel - boundary walling), 8 (Design details 1), 11 (Design details 4) for PHASE 1 ONLY and full compliance with Condition 26 (CMS) of permission 22/03666/FUL- Change of use of existing buildings from residential institution (C2 use) to residential (C3 use) to form a total of 11 no. dwellings, through demolition of modern extensions, internal alterations and extensions, demolition of modern institutional buildings and replacement with new dwellings, associated garaging, landscaping, construction of new wall in alignment of historic walled garden and associated works - Permitted

25/03155/NOTDEM Sunground Garages The Sunground: Prior notification for demolition of 30x total prefabricated concrete garages in 2no blocks, with asbestos corrugated roofs and steel up-and-over doors – Prior approval not required.

### Dog Fouling

If you witness dog fouling not being picked up by the owner, please report by following the link. <https://www.cotswold.gov.uk/environment/litter-street-cleaning-and-dog-fouling/>

**Neighbourhood Policing Team:** Police Seargent Garrett Gloyn, PC Morley – Blackwell, PCSO Edmund Maina 101@gloucestershire.police.uk

*The Agenda and minutes of the last parish council meeting can be viewed at [www.avening-pc.gov.uk](http://www.avening-pc.gov.uk). The Parish Clerk can be contacted via email: [parishclerk@avening-pc.gov.uk](mailto:parishclerk@avening-pc.gov.uk)*

# CHIM-CHEROO


PROFESSIONAL CHIMNEY SERVICES

Hire a lucky sweep  
for your wedding!

- Woodburners, open fires, Agas etc
- Member of the Institute of Chimney Sweeps
- Fully insured

- CCTV inspections
- Blockages removed
- Safety certificates issued
- No mess

Jos Stone  
07507 638 316  
[chimcheroonailsworth@gmail.com](mailto:chimcheroonailsworth@gmail.com)



# STAMP

ARCHITECTURE AND DESIGN

E: [hello@thisisstamp.com](mailto:hello@thisisstamp.com)  
W: [www.thisisstamp.com](http://www.thisisstamp.com)  
T: 07899892351

EXTENSIONS • CONVERSIONS • PLANNING APPLICATIONS • LISTED BUILDINGS





# Regular Activities in the Villages

Would organisers please let us know if there are any changes or additions to these events

Event	Day	Time	Where	Contact
Avening Silver Band	Monday	7.00-9.00pm	Memorial Hall	<a href="mailto:aveningsilverband@gmail.com">aveningsilverband@gmail.com</a>
Avening Church bell ringing	Monday	8.00-9.00pm	Church bell tower	Andrew Lelliott 07726 345516
Community Café	Tuesday	9.00am - noon	Social Club	Gill Adams 07826 291759
Mobile Post Office	Tuesday	9.30-11.30am	Social Club car park	
Cherington PC	Tuesday bi-monthly	6.00pm	Cherington Village hall	Babs Malony 07958116794
Line Dancing	Tuesday	8.00 - 9.30 pm	Social Club	Social Club 01453 833760
Avening Churchyard tidy up	Wednesday	6.00 - 7.00pm	Holy Cross churchyard	Churchwardens
Avening PC	2nd Wednesday each month	7.30pm	Memorial Hall	Shani Baker 07415 039234
Avening Cinema Club	Last Wednesday each month	7.30pm	Memorial Hall	aveningcinemaclub@gmail.com
Avening W.I.	2nd Thursday each month	7.30pm	Social Club/ Memorial Hall	Liz 01453 833803
Fledglings for pre-schoolers	Fridays during term time	2.00 - 3.00pm	School Garden	Avening School
Fun Skittles	Last Saturday each month	7.30	Social Club	
KNEAD Mobile Bakery	Last Saturday each month	9.45 - 10.30am	Memorial Hall	
Charity Quiz	1st Saturday each month	8.00pm	The Bell	
Avening Singers	Sunday	4.00pm	tba	Derrick Pierce 01453 835090

# FREE MOT

With every major service\*

Get ready for the winter

- Servicing on all makes and models from £190
- Body repairs
- Vehicle diagnostics
- 4 Wheel laser alignment
- Tyres, Exhausts & more

**FREE**  
Courtesy Car

\*with presentation of this advertisement

for free, friendly, local advice, pop in or give us a call.

**01453 832871**

Book online anytime  
[www.auto-bodytech.co.uk](http://www.auto-bodytech.co.uk)



Inchbrook Trading Estate, (A46) Bath Road, Nailsworth, GL5 5EY



# The Bell at Avening

a traditional British pub serving a great selection of real ales and authentic Indian food



OPENING TIMES:  
MONDAY: CLOSED  
TUESDAY-THURSDAY: 5.00PM-CLOSE  
FRIDAY: 4PM-CLOSE  
SATURDAY & SUNDAY: 3PM-CLOSE  
FIRST SATURDAY OF EVERY MONTH  
IS TONY'S QUIZ NIGHT

*Little*  
**INDIA**  
at THE BELL

Little India @ The Bell, serving food from Tues-Sun 5.30pm-close  
Call **01453 836453** for great food to takeaway  
Visit our website for full menu



Call us on: **01453 836422** or e-mail us at **info@agpubs.co.uk**

**www.thebellavening.co.uk**

Find us on Facebook  
by simply searching  
"Bell at Avening"



## Day Centre & Social Club

- Home cooked lunch plus teas/coffees
- Group activities, craft sessions and companionship

## Home Care Services

- Help with Personal & Domestic tasks, Sitting Service
- Meals on Wheels locally

## Nursing Home

- General & Specialist Dementia Nursing
- Registered Nurses on duty 24 hours a day
- Free and Pre-arranged Respite Care available all year round



**Horsfall  
House**

For more information please  
contact us on **01453 731 227** for  
an Information Pack or go to:  
**www.horsfallhouse.co.uk**

Patron: HRH The Princess Royal, Minchinhampton Centre for the Elderly, Registered Charity No: 287479