

# The Villager

A Magazine for Avening,  
Cherington and Nags Head



**August 2023**

*[editors@villagemag.online](mailto:editors@villagemag.online)*



*Richard Murray*



*Liane Wheeler*



*Raph Arwas*



*Annabel Crapper*



*We pride ourselves on our personable & professional approach to selling homes using contemporary marketing tailored to your individual needs.*

*As your nearest local estate agent, we offer unrivalled knowledge of the area built up over 30 years proven experience.*

*Pop in and meet the team in our Minchinhampton office.*

3 High Street, Minchinhampton, GL6 9BN  
01453 886334

*Get ahead in your property search,  
follow us on Facebook & Instagram*



# August 2023

Do you watch the News and Weather on a regular basis and feel that the world has gone a bit mad and that the weather reflects this internationally? Recently, we were shown during one such broadcast the cyclical nature of our present weather pattern. Each batch of fine and wet weather appears to follow a monthly pattern. We either swelter, as in June, watching our gardens wither or the next month paddle through downpours which wreck all the best laid plans. Such was the experience of our own villages as the Cherington Show weekend approached. The unceasing rain of Saturday the 22<sup>nd</sup> July brought despair, as did the morning of the Show. Then something miraculous happened – the sun appeared and drew people literally in their hundreds. Once again things didn't look so bad and the event was even more successful than ever. You will see a few pictures in the next edition to give you a hint of the happiness of that day.

Just over ten years ago a very keen, but ignorant recruit joined the Villager editorial team. The intervening years have taught that recruit much on the technical issues needed to produce a magazine, but more importantly have provided a precious feeling of involvement in the many aspects of life in Cherington and Avening.

Without our readership, who send us their news and thoughts, we are nothing. So keep your items coming. Ending on a personal note, which I am told I may (!), and writing as Frances, I would like to thank you for those ten happy years and also thank the rest of the Villager team for all their hard work and friendship.

*The Villager Editors*

## The Villager Magazine

**Editors** Jane Archer (07812 137161), Frances Conway (01453 832177), Derrick Pierce (01453 835090) and Julia Tu (07764 946969)  
**Advertising** [editors@villagemag.online](mailto:editors@villagemag.online) Gwyneth Simpson 01453 836556  
**Deliveries** Cas Boddam-Whetham 07900 472999  
**Deadline** 18th of each month

Read online at [www.avening-pc.gov.uk](http://www.avening-pc.gov.uk)

## Photographs in The Villager Magazine

Many thanks to **Zac Curtis** for this great shot of the llamas exhibited at the Cherington Show.

Please keep sending us your photographs, especially since all the images will be in colour in the downloadable version of the Magazine.

[editors@villagemag.online](mailto:editors@villagemag.online)

*The Editors do not guarantee the accuracy of the information contained in this publication or accept responsibility for errors or omissions or their consequences. Opinions expressed by contributors to this publication are not necessarily those of the Editors.*

# Contacts for the Villages

Avening & Cherington Churches Reader	Derrick Pierce	01453 835090
Avening Bell Tower Captain	Andrew Lelliott	01453 835783
Avening Church Churchwardens	Elizabeth Buchanan Stephanie Hamilton	01453 833016 07796 981308
Avening Church Flower Team	Gill Adams	01453 833175
Avening Church PCC Treasurer	Diane Martin	dianenmartin59@gmail.com
Avening Cinema Club	Sophie or Sue	aveningcinemaclub@gmail.com
Avening Community Café	Gill Adams	07826 291759
Avening Community Orchard	Phoebe Carter	pklc1@hotmail.com
Avening History Project	Jean Chatelain	ajeanchatelain@icloud.com
Avening Memorial Hall	David Bendall	01453833479
Avening Oil Coordinator	Frances Lindley	fndly4@aol.com
Avening Parish Council Clerk	Shani Baker	07415 039234
Grumbolds Ash with Avening District Councillor	Tony Slater	07793 669930
Avening Playgroup	Angie Heslop	01453 832695
Avening Primary School	Jane Rushton	01453 833191
Avening Silver Band	Jim Hill	01453 834438
Avening Social Club	Derrick Ind	01453 835752
Avening Singers	Derrick Pierce	01453 835090

Avening WI	Liz Knowles	01453 833803
Avening Youth Club	The Door	01453 756745
Cherington Village Hall	Camilla Trotter	07545 054160
Cherington Parish Council Clerk	Barbara (Babs) Malony	Cheringtonparishcouncil @yahoo.co.uk 01285760276
Cherington Church Churchwardens	Helen Di Mauro	07796 937268
Cherington Church Flower Team	Elizabeth Workman	01285 841294
Cherington Church Organist	Elizabeth Workman	01285 841294
Cherington Church PCC Secretary	Elizabeth Workman	01285 841294
Cherington Church PCC Treasurer	Paul Cable	cabes50@yahoo.co.uk
Friends of Avening School	Nicky Dill	01453 833191
South Cotswold Community Wellbeing Agent		01452 528491
Stroud Hospital	Reception	0300 421 8080
Tetbury Hospital		01666 502336

## **VILLAGE & AREA WEB SITES**

**Avening Parish Council: [www.avening-pc.gov.uk](http://www.avening-pc.gov.uk)**

**Cherington Parish Council: [cheringtonpc.org.uk](http://cheringtonpc.org.uk).**

**Cherington Village: [www.cheringtonvillage.co.uk](http://www.cheringtonvillage.co.uk)**

**Cotswold District Council: [www.cotswold.gov.uk](http://www.cotswold.gov.uk)**

**Facebook: Avening    Instagram: #aveningvillage**

# Avening and Cherington Events

Come along and join in the fun at any of the regular or special events below - everyone is always welcome!

*Both the Memorial Hall & Social Club can also be hired for private functions*

## AUGUST

**Tues 1st, 8th, 15th, 22nd, 29th**

Community Café at the Social Club - 9am-12pm

**Fri 4th, 11th, 18th, 25th**

Nailsworth Mills Bowls club - come for a free trial, 6.30pm

**Sat 5th**

Quiz Night at The Bell - £2 per person, max 4 per team

**Wed 30th**

NO FILM CLUB IN AUGUST

## SEPTEMBER

**Fri 1st**

Play Rangers Activity Day at the Playing Field, suitable for all U14s, but U7s must be accompanied. No registration so kids can come and go as they please - 10am-4pm, Free for all

**Sat 2nd**

Quiz Night at The Bell - £2 per person, max 4 per team

**Tues 5th, 12th, 19th, 26th**

Community cafe at the Social Club - 9am-12pm

**Tues 12th, 19th, 26th**

Youth Club for ages 8-14 - Memorial Hall, 6.30-8pm (free)

**Sun 17th**

Pig Face Day - Fun for the whole village at this celebration of some ancient local traditions! See page 18

**Wed 27th**

Cinema Screening in Memorial Hall - 7.30pm start, £5



# Letter From Avening Parish Council Leader



Avening can often seem in some ways similar to a swan, gracefully gliding across the water but paddling rapidly underneath. Similarly, life in the village can seem quiet, but with lots happening out of sight. However, the 'village swan' has appeared to slow down in readiness for the summer holidays; so not a lot to report on that's new.

I would like to start by saying thank you to Roger Lindley and his assembled team for the enthusiasm and focus that has been put into the plans for this year's **Pig Face Day** celebrations, which will be in September. More details will follow in next month's Villager Magazine. The Parish Council has agreed to donate some funds towards this event and we wish it every success.

**Grant Applications** – a reminder that any requests for grants towards a local event need to be submitted by the beginning of October in time for the Parish Council to include successful applications into the financial year's plans.

Thank you also to those of you who have started to use drawing pins to attach posters to the various sites around the village. Not only can they be reused, but they will help to avoid the numerous dangerous and unsightly staples that are usually left to rust away over some years.

**Memorial Hall** – a few points mentioned in the last issue; the Trustees have now signed an interim lease with the Athelstan Trust which will enable school life to continue as usual whilst the terms of a longer term lease are negotiated. The next meeting with the Trust is scheduled for September and we look forward to achieving an agreement as soon as possible.

We are also looking at the possibility of laying down a Badminton court to expand the range of activities the Hall can offer to the village. A long time ago there was an Avening Badminton Club, so maybe this could resurrected in some form.

The Trustees are also looking at the option of replacing the floor mounted wall heaters with more efficient, ceiling mounted heaters which give radiated heat.

Last but not least we would like to refurbish the hall toilets, and will continue to seek quotes to carry out this work in the near future.

If you are about to embark on your summer getaway, I wish you safe travelling and let's hope for the return of some good weather, especially for the children to fully enjoy their time off from school.

***Patrick Mulligan (Mob: 07713 068436)  
Chairman of Avening Parish Council***

# Avening and Cherington Churches

We hope your summer is going well, and that it can be a time for you to relax and recharge your energy.

Some of us will be cooling off by the water in boats, or swimming, or just enjoying the sea breeze. The Bible readings this month reflect this season, though it was work, not holiday that brought Jesus to the water with his apostles. On these occasions, over and over, Jesus demonstrates to his disciples that they can put their complete trust in Him.

In this period when we do not have our own priest, our visiting priests for both Cherington and Avening remain as our good supporters and teachers. We count ourselves blessed that they can lead us in such inspiring church services.

Do come and join us. You would be very welcome.

*Elizabeth and Stephanie, Church Wardens*

Part of the ministry of the church is prayer so if you know of anyone or thing that needs our prayer please contact either the churchwardens or our Reader, contact details are on page 4.

## Church Services

Date	Holy Cross, Avening	St. Nicholas, Cherington
6 <sup>th</sup> August 10.00am	Morning Prayer	Holy Communion
13 <sup>th</sup> August. 10.00am	Holy Communion	No Service
20 <sup>th</sup> August. 10.00 am	Morning Prayer	Holy Communion
27 <sup>th</sup> August. 10.00am	Holy Communion	No Service
3 <sup>rd</sup> Sept. 10.00am	Morning Prayer	Holy Communion

## Donations to Avening Church



We have set up a QR code which if scanned with your smart phone will enable you to make a donation to Avening Church of any amount that you are able to. You then just feed into your phone your card details and the money will be transferred to our bank account. If you are an income tax payer you will also be given the opportunity to gift aid your donation.



# District Councillor's Report



**At CDC:** I attended my first Overview and Scrutiny Committee which was very interesting as it gave me my first insight into the workings of the council. The committee has responsibility to highlight any issues on reports that are going to the cabinet for their approval. On the finance report I queried why income from car parking was almost £500k lower than forecast, and did it have anything to do with removing the ability to pay by cash? Another report highlighted a new Rural England Prosperity Fund that will open for applications in September/October – this grant scheme will enable local organisations and businesses to request funds for improvements to local facilities such as village halls and energy efficiency improvements. I'll let you know when it is open, but it would be advisable to make plans now. It will need a 20% matched fund from the project.

You may have seen elsewhere that the new 'Changing Places' toilet facility is now open in the Abbey Grounds in Cirencester. At this week's full council it was agreed to progress with the installation of solar panels on the roof of CDC HQ. I have already been to several PC meetings this month, and it's interesting that there are common themes in the villages – mostly around speeding and parking. It's a very difficult subject to resolve but I have been able to recommend actions to work with GCC Highways to get data before deciding on a course of action. It is also apparent that attracting new councillors is difficult, with several parishes short of volunteers.

I have been reading that Link, the organisation that runs the UK cash machine network, is opening shared hubs to provide a banking service in towns where all banks have left. The idea is that individual banks have their own staff on duty one day per week, but general banking can be carried out every day. I have made early enquiries if such a hub could be opened in Tetbury.

**Avening & Cherington:** After several chases, Highways have agreed to look at the entire lane from Cherington to the Culkerton junction and repair multiple dangerous potholes.

The build at Sunground continues to cause issues by ignoring the traffic management plan – I am working with Enforcement to resolve this.

**Guided walk:** The Cotswold Voluntary Wardens will be hosting several local walks: on Friday, 11th August, 2023 – Start: 10:00 am Sapperton: Difficulty: MODERATE Duration: 3 HOURS Distance: 5.5 MILES. Start point: Sapperton Village, by the telephone box near the church. GL7 6LG. A circular walk in and out (and up and down) the Frome valley, initially towards Edgeworth and its polo grounds, then through the nature reserves of Daneway Banks and Siccaridge Wood.

*Tony Slater, CDC District Councillor,  
representing Grumbold's Ash with Avening  
077936699309*

# Puzzle Corner

8			6	9			4	
		4			3	8		5
1		3		7			2	
		1			7	5	3	8
5								2
3	8	6	1			4		
	3			8		1		4
4		8	7			2		
	9			2	1			3

© 2013 KrazyDad.com

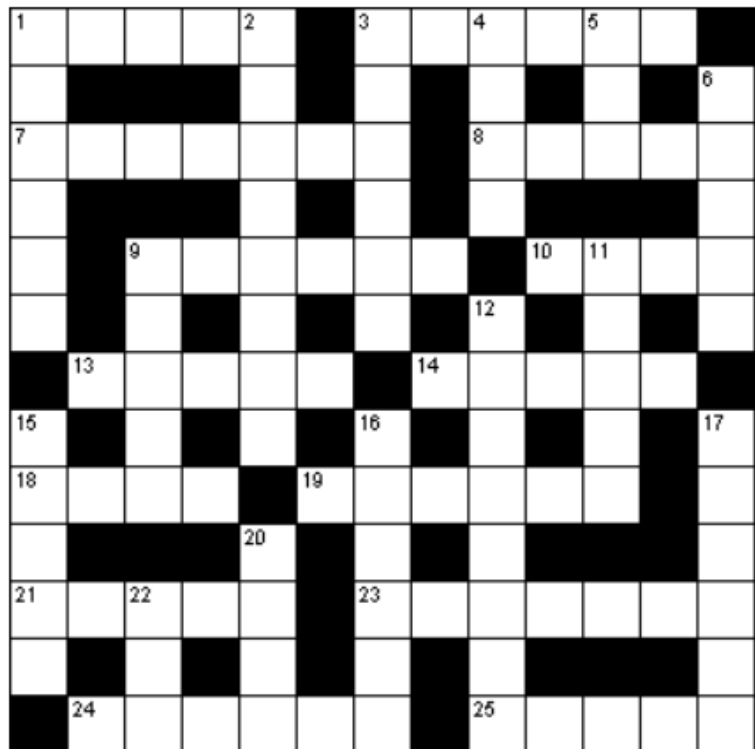
## Sudoku

Fill in the blank squares so that each row, each column and each 3-by-3 block contain all of the digits 1 - 9. If you use logic you can solve the puzzle without guesswork.

Answers on page 35

## Across

1. Rodent (5)
3. European flatfish (6)
7. Arctic whale with spiral tusk (7)
8. Type of duck (5)
9. Carnivorous burrowing mammal (6)
10. Breed of dog (4)
13. Showy parrot (5)
14. Venomous snake (5)
18. Elephant ivory (4)
19. Billfish (6)
21. Small bird (5)
23. Sparrow hawk (7)
24. Musteline mammal (6)
25. Reptile (5)



© <http://www.puzzlechoice.com/>

## Down

- |                                 |  |                        |
|---------------------------------|--|------------------------|
| 1. Long-tailed primate (6)      | 9. Large plantigrade mammals (5)           | mammal (6)             |
| 2. Spiny anteaters (8)          | 11. Bird with long legs, neck and bill (5) | 17. Sheepdog (6)       |
| 3. Young hen (6)                | 12. Shellfish (8)                          | 20. Colony insects (4) |
| 4. Simians (4)                  | 15. Large wading bird (5)                  | 22. Drone (3)          |
| 5. North Atlantic food fish (3) | 16. Nocturnal canine                       |                        |
| 6. Corvines (5)                 |  |                        |

# Gilian's Poem of the Month

My father had a very wise saying: "Happiness is not having whatever you want, but wanting whatever you have, and want is a very different thing from need!"

## Happiness

Throughout our lives from birth to death we strive to find true happiness,  
That bright, elusive butterfly, which hovers close, then flutters by.  
It can't be bought with worldly treasures, but I find my joy in simple pleasures;—  
In family love which never ends; the welcome fellowship of friends;  
My faithful dog's soft, loving eyes; my purring cats by the fireside;  
In the breathless hush that greets the dawn; a robin fluting on an April lawn;  
In skylarks trembling on the wing, higher and higher, as they sing;  
To hear, at dusk as day grows dim, a thrush's heavenly evening hymn;  
My peaceful garden in the sun; homecoming when the day is done;  
The wide span of the sky at night, lit by a thousand stars soft light;  
A rainbow's arc across the sky; the changing seasons rolling by;  
The beauty of the countryside; the blossoming earth at Eastertide;  
Bluebells flooding the woods in May; new young lambs, that skip and play;  
The warm kiss of the Summer sun, gilding the world with its benison;  
Bright scented flowers, whose perfume brings fat bumblebees on gossamer wings;  
The glorious woods, which burn and blaze with colour through Autumn's golden haze;  
Ripe fruit and nuts the hedgerows yield; rich harvest in orchard and farmer's field  
The whisper of the falling snow, cloaking the countryside below;  
A blustery ride up the old Rudgeway, on a lively horse, on a Winter's day;  
The ancient church whose rafters ring with well-known hymns I love to sing;  
Great music which tears my soul apart, leaving sweet echoes in my heart;.....  
I find joy in so many things, with all the happiness that brings,  
All these and oh so many more! All safely in my memory store...

***Gilian Bulmer-Davison***

*Gilian has recently had a stint in hospital but is now safely home again. The Editors would like to wish her a speedy recovery.*

# Out and About

## The Cotswold Canals

I recently had the pleasure of investigating this peculiar-looking building on the right, now a visitor centre for the Cotswold Canals Trust. It is situated along the Stroudwater canal in a business park close to Stonehouse.

This task reminded me what a fantastic resource we have nearby that some villagers may not be aware of, especially those new to the area.

The eight mile Stroudwater Canal was built as a cut to the river Frome between 1775 and 1779 by the Stroudwater Navigation Company. It runs between Framilode on the Severn to the basin at Wallbridge in Stroud. Its primary purpose was to bring cheap coal to the mills from the Forest of Dean and Staffordshire as they transitioned away from water power. Ten years after its completion, the Thames & Severn Canal was completed which gave Britain her first east-west navigable link.

Following the arrival of the railway in the 19th century, the canals went into decline. The building of the M5 during the 1970s resulted in debris being tipped into the Stroudwater, which seemed to be its death knell.



Thankfully that was not the case and today the canals are a hive of activity. A multi-million pound restoration is being carried out in stages which will ultimately (some years away) see the canal fully navigable once again. Already, the Stonehouse to Thrupp section has been completed, with water flowing once again to areas such as the Ocean Jubilee Bridge (left, photos © Network Rail) - yes, there's an ocean in the canal! Brimscombe Port is being redeveloped to incorporate a marina and waterside properties and many of the locks have been repaired or replaced.

There is much more information about the canals and their history online, along the towpath and at the Museum in the Park in Stroud. Some useful websites are <https://cotswoldcanals.org/> and [Cotswold Canals in](https://CotswoldCanals.in)

## Pictures.

Oh, and, the building pictured at the beginning of this article is a unique 1940-41 World War II pillbox. Situated on the Green GHQ stop line that had been created to defend Bristol (as were the Avening pillboxes), its role, and that of its neighbouring sturdier pillboxes, was to defend the 'shadow' factories in Stonehouse. These housed relocated London factories fabricating vital parts for aircraft during World War II.

*You can reach the canals easily from Avening via Hampton Fields. At the Ragged Cot junction, turn left then immediately right to go down Hyde Hill. At the bottom of the hill, you should be able to park by the mill on the left. There is a footpath to the left that will take you towards Stroud via Brimscombe and right towards Chalford and the Golden Valley.*

*Julia Tu*

**shiny Goodness** 01453 832 986  
George St, Nailsworth  
www.shinygoodness.co.uk  
Your local health food store

ECO VER ♻️ FAITH IN NATURE SALT OF THE EARTH bio<sup>D</sup>

**Over 60 refill & loose products including milk, nuts & seeds, oats & grains, pasta, orzo, cleaning products & toiletries. Locally sourced eggs & honey.  
Large range of supplements & Free health advice.**

## **A Bite to Eat?**

**Arranging a Group Lunch, Afternoon Tea, Christening Party or other social event ?**

Avening WI 'Bite to Eat' scheme may be able to assist with your catering needs.

We can provide and serve a selection of freshly prepared sandwiches, scones and cakes; a fork or finger buffet; or a two course meal.

**For prices and any further details :**

Please telephone Liz on **01453 833803** or e-mail **lizknowles@hotmail.co.uk**



# Avening & Cherington Cricket Club

The Ashes has sparked the interest of cricket in quite a lot of people recently and this is probably why we have been asked about the Avening & Cherington Cricket Club a couple of times, so here is an update.

The committee met back in February to discuss the future of the club. It was pleasing that most members were very keen for the club to continue by playing only away fixtures and a new committee was formed:

Chairman – Ian Smith  
Secretary - Sarah Smith (07747 588 188)  
Treasurer – Dave Thomas / Sarah Smith  
Fixtures – Alastair Bullock / Jay Richings

At the meeting it was decided that a large portion of the funds in the bank would be put into savings, and should a new ground or ground share be an option in the future, we would be in a position to contribute towards maintenance, kit etc. We also donated £2,000 to The Mark Townsend Charitable Trust – Mark was a very popular and talented member of the club.

As many of you will be aware, in 2021 the club was forced to leave the ground that we had played on for generations. But while our great get-togethers and superb cricket teas are no longer in Cherington, we are still active. Over the last couple of months, the “lads” (some not quite so lad-like anymore!) have played some very entertaining mid-week friendly matches, with excellent results.

1 <sup>st</sup> June v. Kings Stanley	A&C won by 1 wicket
8 <sup>th</sup> June v. The Strayhounds, Bisley	A&C won by 10 runs
14 June v. Chalford	A&C won
28 June v. Tetbury	A&C won
11 June v. Carpenters Arms	Rain cancelled
8 July v. Selsley	A&C won by 6 runs

About 18 months ago we held a get together for past / present players at Minchinhampton Golf Club, we hope to be holding a similar event soon – more details to follow.

We are always looking for new members, so if you would like a game of cricket ... with a lot of fun thrown in, please don't hesitate to get in touch.

*Sarah Smith, Secretary*

## The Village Notice Board

The village notice board, on the side of the Memorial Hall, is a good way of publicising village events and items of local information. Posters, ideally size A4 or A5, can be put up for you on this board. They can be delivered to John and Sandra Hetterley, 2, Orchard Field or given to them directly. They will be taken down once they are out of date. Other posters may be removed and recycled once they are faded or to make space for others.



## Nailsworth Bowls Club

Have you ever wondered whether lawn bowls would be fun to try but thought it looked complicated and just for retired people?

It's actually a great game for all ages, it's social and it keeps you fit and active.

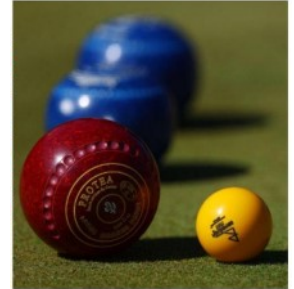
At Nailsworth Mills Bowls Club we have a quick and easy way to get you involved and give it a try - no special clothes or complicated rules and etiquette - it's called Bowls Bash!

So come along to one of our Afternoon Fun Day & Bowls Bash Sessions – the next one is on **Saturday 19th August 2023 from 2pm.**

Bring the family and/or friends along too. We'll supply the bowls and show you what to do, then join in as you play to help with the scoring and how to bowl effectively. The bar will be open too, with the first drink half price.

BTW, if you can't make this date come along on our Friday evening Club Nights and have a go. You just need flat-soled shoes.

See you there!



## Avening Art Group



The Avening Art Group is an informal friendly group that meets weekly at Avening Park Farm (Celia's) on Wednesdays from 10 to 12. All budding artists are welcome to attend – further information available from the Community Cafe. There is also fortnightly tuition from Mark Kelland. Look forward to seeing you.

## Avening Church of England Education Fund (ACEEF)



The trustees of ACEEF have limited funds available to assist Avening residents under 25 with their education. These grants are intended to help ensure that young people in the village are not deprived of the opportunity to receive good education suiting their aptitudes and abilities. This may mean financial help towards travel costs, books and equipment or uniform and work wear.

If you or your children are in need of such support, please request an application form by phoning 01453 833016 or emailing [buchanan.el@gmail.com](mailto:buchanan.el@gmail.com).



# Avening School

## Goodbye and Good Luck!

What an exciting and action packed year it has been at Avening School! Over the past twelve months, we have got to know our new families that joined our school community last September, as well as new members of staff. In addition to the learning and development taking place in the classrooms, there have been theatre trips, residential, visitors, school productions, fetes, sports tournaments, not forgetting a very special whole school picnic to mark the King's Coronation in May.

During the last few weeks of term, FOAS collaborated with pupils and staff and, despite the torrential downpour outside, delivered a fantastic summer fete. Each class had made crafts to sell to parents and family members, and the children also took turns running games stalls.

Much needed funds were raised to put towards updating IT equipment for the whole school and many people sponsored a book for our school library, which enables children to have access to a current and varied selection of books. Thank you to everyone who supported this event, as your contributions make a huge difference.

In the last week of term, our year six pupils hosted former and current staff and parents at their leavers' tea party and shared their favourite Avening School memories at their final assembly.

As we bid a fond farewell to our year six children as they embark on the next stage of their educational journey, we also look forward to welcoming our new reception pupils and their families to our school in September. For now, everyone is looking forward to a well-deserved summer break.



*Playtime!*

Thank you to everyone who supports our school community throughout the year. See you in September!

Following a recent incident involving a child and a vehicle outside our school we are looking for volunteers to act as crossing chaperones at either end of the school day.

If you would be interested in volunteering for this role, please contact the school office.

**Alex Adcock**

*For more information about this busy place of learning, please see our school website: [www.avening.gloucs.sch.uk](http://www.avening.gloucs.sch.uk)*



*Sponsored walk*





**TOAD HALL**  
TRULL FARM  
TETBURY  
GL8 8SQ



Your own private room for lunches, dinners, drinks, receptions, childrens parties, business meetings, exhibitions, film nights. Large screen and internet.

Kitchen plus smaller room available. Outside or "inhouse" catering. A marquee could be added if required.

For Bookings and prices please contact :  
Fi Mitchell  
fimitchell06@btinternet.com  
01285 841229 07885 094393

Cas Boddam-Whetham MCSP RCT SIRPA Practitioner

## **Chartered Physiotherapist**

**Craniosacral Therapist**

**Specialist in the treatment of stress related chronic pain and all musculoskeletal problems**

Nags Head, Avening  
Telephone: 07900472999  
Website: [www.casbw.co.uk](http://www.casbw.co.uk)

# Church Floodlighting



The church looks beautiful at night when floodlit.  
During July the it was floodlit as follows:

## Sunday 9<sup>th</sup> July.

In loving memory of **Sandra Trinder**, one year on  
and always in our hearts.  
Love Geoff and all the family.

## Thursday 27<sup>th</sup> July

In loving memory of **Angela Kerry** who left this world a year ago on 27<sup>th</sup> July  
2022. Our lives are not the same anymore and we all miss you so very much.  
In our hearts forever, Kris, Margaret, Rob, Kane, Eloise, Ralph and your four  
legged companions Barney and Monty.

If you would like to have this in memory of a loved one, or to celebrate a special  
event, contact **Piers Hansen on 07770 745642**. The cost is £10 for 2 hours.

**BELL  
HOUSE**  
Dental Practice

- **Dentistry for all the Family**
- **Private and Denplan**
- **Cosmetic treatment**
- **Tooth whitening**
- **Hygienist**

 **Denplan**  
At the heart of dental care



Robert W. Carter B.D.S.  
7 New Church Street . Tetbury . Gloucestershire . GL8 8DS  
Telephone (01666) 503788

0100315

# Custom Envelopes, Packaging, Mini Guides, Booklets, Boxes, Signs, Labels & Much More...



# WHEATLEY PRINTERS Ltd

ZETA PRINTING STROUDPRINT



Supporting the



WOODLAND  
TRUST

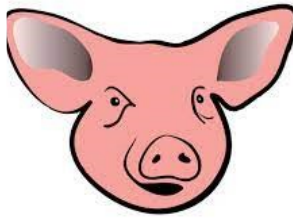


[www.wheatleyprinters.co.uk](http://www.wheatleyprinters.co.uk) 01453 731001

Units C1 - C5 Phoenix Trading Estate, London Road, Stroud, Glos GL5 2BX

# Cherington Show





# **Pig Face Day Celebrations**

## **Sunday 17 September 2023**

After a break of five years, Avening's Pig Face Day is being celebrated on Sunday 17 September 2023.

Currently the programme of events is as follows (there could be more to come!):

### **Avening Church of the Holy Cross (1000 – 1130)**

Eucharist Celebration by Archdeacon of Gloucester  
Dedication of the Church  
(all welcome)

Progression of Pig's head to Memorial Hall  
(Children in Fancy Dress very welcome)

### **Memorial Hall (1145 - 1400)**

Avening Singers (1145)

Queen Matilda: The Play by Avening School (1200)

Avening Silver Band (1245- 1345)  
Music compilation by Mel Young

### **Refreshments**

The Bell Inn (from 1200)  
(Drinks may be carried into the Hall)

Avening WI (from 1245-1400)  
Coffee, tea and soft drinks  
Pulled Pork and apple sauce baps, plus vegetarian option

Angel Ices of Gloucester

**Everyone Welcome!**



Tetbury based, independent Estate Agency offering a friendly, yet professional and reliable service to house selling and purchasing.

“The team at Hunter French headed by Sam are a credit to the industry. It’s a shame not all agents are as professional. Throughout the whole process they were readily available, returned calls quickly and solved problems if they occurred. I would strongly recommend using HF in Tetbury.”

*Mr & Mrs T - November 2022*

t. 01666 505068

e. [tetbury@hunterfrench.co.uk](mailto:tetbury@hunterfrench.co.uk)

w. [www.hunterfrench.co.uk](http://www.hunterfrench.co.uk)

2 London Road, Tetbury, GL8 8JL



*Are you following us?!*

**Experience the Difference...**



# Avening Youth Club



The Youth Club is held every Tuesday in term time **6.30-8pm (note new times!)** in the Memorial Hall.

All children aged 8 to 14 are welcome and there is **NO CHARGE!**

## NAILSWORTH ACCOUNTANCY

### ACCOUNTANCY SERVICES FOR SELF EMPLOYED AND LIMITED COMPANIES

Self-Assessment Tax Returns  
Accounts Preparation For Small Businesses  
Company Accounts  
Business Start Ups & Company Formations  
VAT Returns and Tax Planning

For a competitive quote telephone Emma

01453 835050

TOWN HALL NAILSWORTH



## **Fred Stevens Funeral Directors**

We give immediate attention – 24 hours  
Traditional and contemporary styled  
funerals arranged

Individual, flexible approach

Well established, family-owned company with highly  
experienced staff

Newmarket Road, Nailsworth, Gloucestershire GL6 0DQ  
telephone 01453 832188

email@fredstevens.co.uk www.fredstevens.co.uk



# Avening Playgroup

The tadpoles we were given in early spring turned out to be many more in quantity than we had originally thought. Relocating them was proving to be a challenge, so a big thank you goes out to all the families who kindly gave the frogs a new home.

Over the past few weeks, our focus areas have been:

**Water play:** The children have played with water beads, coloured water, water animals, ice and have also been cleaning the toys.

**Getting ready for school:** looking at photos of the school and lots of discussions about what they know about school. Going to the school's sports day and taking part in a race. Playing playground games and using the bats and balls for PE.

**Art/craft week:** While the older children attended the move through days at school the younger children were involved in lots of activities involving, painting, sticking, printing, threading necklaces and drawing.

**Life cycle of a butterfly:** Our caterpillars had grown very quickly and we had to let them free a couple of weeks ago but we still discussed the different stages of a butterfly, coloured in pictures and stuck them in the right order, made butterfly wings and collages.

I write this article in our final week of term and we have been saying goodbye to all our leavers. This year eighteen children will be leaving us to go to school. They returned from the move-through days excited and raring to go. Most of them thought then that they were too big for playgroup and cannot wait to start school in September. We wish them all the best!

Please note our opening times for the Autumn term:

Monday: 9.15 – 1.15

Tuesday: 9.15 – 1.15

Wednesday: 9.15 – 1.15

Thursday: 9.15 – 1.15

Friday 9.15 – 12.15

We are currently recruiting for a new deputy and are keeping our fingers crossed that we have some good news in September's article.

Hope you all have a lovely summer and look forward to welcoming the children at



*Some of this term's leavers*



*Letting the butterflies free*



playgroup on Wednesday 6th September.

We have spaces left for the autumn term, so if you would like more information about the playgroup or to place your child on our waiting list, please call us on 01453 832695 or email [aveningplaygroup@gmail.com](mailto:aveningplaygroup@gmail.com). We are open weekday mornings during term time.

*Angie Heslop*



**We are recruiting a Deputy Early Years Manager  
15-20+ hours/week, permanent position, term time  
only**

We are looking for an enthusiastic, fun-loving and caring person to join our team at this fantastic local setting. Must be Level 3 qualified and ideally have certificates in both Child Protection and First Aid. Candidates should have a clear understanding of the EYFS and have a positive approach and dedication to the role.

If you are interested or would like more information, please contact our Chair, Krista Jones, at [aveningplaygroup.chair@gmail.com](mailto:aveningplaygroup.chair@gmail.com). Avening Playgroup is committed to safeguarding and promoting the welfare of children. Applicants will need to provide right to work in the UK documentation, undertake an enhanced DBS check, and provide two references

**QUEEN MATILDA: THE PLAY**



How did she resolve the 1068 immigration crisis?

How did she deal with the Dukes of Sussex and York?

What is the relevance of Stinking Bishop cheese?

**Avening School have all the answers.**

**Memorial Hall**

**Sunday 17th September 2023**

# Down Memory Lane



## Village Archive

Following a great deal of work by Jean Chatelain the following subject areas are now available on the village archive, accessible via the website at <https://www.avening-pc.gov.uk/archive%20home.htm> – or just go to the home page and follow the link.

The following topics are all covered: Church; Maps, Surveys & Walks; Pig Face Day; School; Census records; Parish registers; WW1; WW2; Buildings & Places; Avening People; Groups & Teams; Village Events; Prehistory; Histories & Stories.

There is a wealth of information, pictures, and historic records to view and explore, and everything is freely available for your personal use. The archive continues to build, so do revisit it regularly, and if you have any material that you think might be interesting, please contact Jean in the first instance.

## Old Avening & Cherington Facebook Page

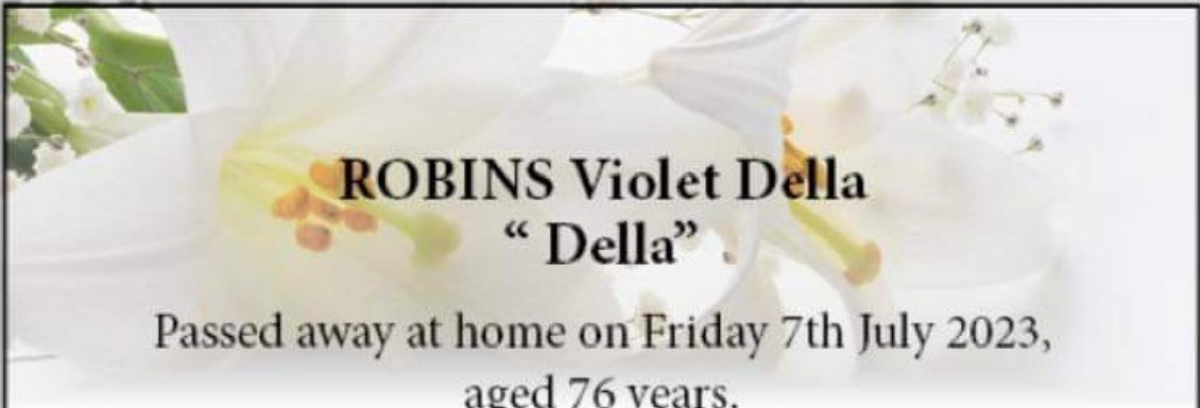
Readers who use social media may be interested to know that there is a popular local history page on Facebook called Old Avening & Cherington.

The group has been running for the last couple of years and it is the place to share any old pictures or stories from Avening, Cherington & Nags Head.

It now has almost 500 members from all over the world, and it prompts some very interesting discussions about times gone by.



Please feel free to upload any old photographs or stories of times gone by for the area - like the photo here, courtesy of Jim Hill, showing Avening Mummers at the home of Mr Basil Ross. (Vale Farm, West End, Avening), probably in the 1930s.



**ROBINS Violet Della  
“ Della”**

Passed away at home on Friday 7th July 2023,  
aged 76 years.

Devoted wife of the late Barry (Bazzer). Loving mother  
to Mark and Claire. Proud grandmother to Jessica  
and Zac. Mother in law to Nigel and Fiona.  
A wonderful sister to John and great nanny  
to Evie and Esme.

She will be greatly missed by all  
family and many friends.

Funeral service will be held in Holy Cross Church,  
Avening on Monday 24th July at 2pm.

Flowers welcome. Donations if desired made payable to  
“Maggie’s Cheltenham “ may be sent c/o Philip Horgan  
at L.E.Perry funeral. Ridgeway Coach House,  
13 Hampton Street, Tetbury. GL8 8JN.

Phone 01666 502295

Email: [tetburyfunerals@gmail.com](mailto:tetburyfunerals@gmail.com).

Web: [www.tetburyfunerals.co.uk](http://www.tetburyfunerals.co.uk)

**TONY’S CHARITY QUIZ NIGHTS**

**THE BELL, AVENING**

**1ST SATURDAY OF THE MONTH**

**£2 A PLAYER: A MAXIMUM OF 4 PLAYERS PER TEAM**

**ALL PROCEEDS TO THE COBALT APPEAL, CHELTENHAM**

# Avening WI

We had a very successful Group Meeting in June where our speaker Charles Sabine, founder of the Hidden No More Foundation, spoke to us about Huntington's disease and showed his film 'Dancing at the Vatican'. At our July monthly meeting we were pleased to present Charles with a donation to the charity. This was followed by an enlightening talk by the Rev. Ian Cooper on the life and techniques of Caravaggio.



*The rill running through the Botanic Gardens of Wales*

In June and July gardens are often at their best and AWI members have enjoyed visits to several gardens, near and far. We travelled to The National Botanic Garden of Wales by minibus, kindly driven by the husband of one of our members. The garden is dedicated to the research and conservation of biodiversity, to sustainability, lifelong learning, and the enjoyment of the visitor. We really



*A sculpture in Miserden Gardens*

enjoyed the beautiful and varied garden with so much to see, including the Mediterranean dome, walled garden, lakes, meadow areas, fairy woods and Apothecary's hall. Our second visit was to the gardens at Miserden House where there was a Cotswold Sculpture event. It was very relaxing walking around the gardens which overlook the beautiful, wooded Golden Valley. There was mixed opinion as to whether the sculptures added or detracted from the experience! The third visit was to the Walled Garden at the Museum in the Park, in Stroud. A small group enjoyed the lovely garden and a craft exhibition.

On a lovely sunny day a group of nine members walked from Avening to The Tippet's Inn, where we had an excellent lunch; three members walked back again, the others having arranged lifts back. Well done to our group walking the Cotswold Way, who tackled a challenging section from Winchcombe to Cleeve

Hill on one of the hottest days in July.

Our skittlers will be in action competing against Rudford for the Plate in the GFWI Skittles Competition. Our book group will be discussing 'The Foundling' by Stacey Halls, while enjoying refreshments provided by the host.

We do not have a regular meeting in August but are planning a social get together in a member's garden. We shall be running the Community Café (with bacon butties) on August 8<sup>th</sup>.

**Bridget Seward**

**For further information please contact our secretary Helen at [aveningwi@gmail.com](mailto:aveningwi@gmail.com) or president Liz on 01453 833803**

## Sandford Trust

Small grants are available from the Sandford Trust, a charity for local young people going on to university or work based training. I would welcome applications from anyone living in the parish of Avening, on or before 8<sup>th</sup> September, after which the annual distribution of funds will be made.

Applications should be made in writing, by the claimant, to:



Mrs Kelly Wilkinson  
Larch House  
Pound Hill  
Avening  
Gloucestershire  
GL8 8LZ



**NAILSWORTH**

George Street

**Tel: 01453 705560**



**TETBURY CLINIC**

23 Church Street

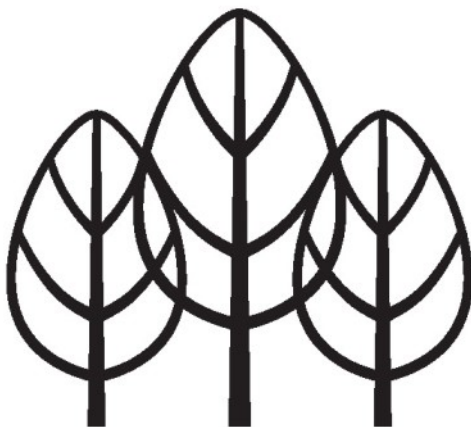
**Tel: 01666 503531**

[www.georgevetgroup.co.uk](http://www.georgevetgroup.co.uk)

**Hospital : 01666 823165**

**Equine : 01666 826456**

**24 hour emergency care**



**TAVERNER**  
Tree Services

- Tree and hedge pruning, reduction and removal
- Stump removal
- Site clearance
- TPO & Conservation Area advice / applications

**NPTC Qualified & Fully Insured**  
**Free assessment & quotations**

James Taverner  
07515 918582  
[info@tavernertrees.co.uk](mailto:info@tavernertrees.co.uk)



# PLAY GLOUCESTERSHIRE'S PLAY RANGERS

## Summer Holidays 2023 Avening Playing Field, Avening

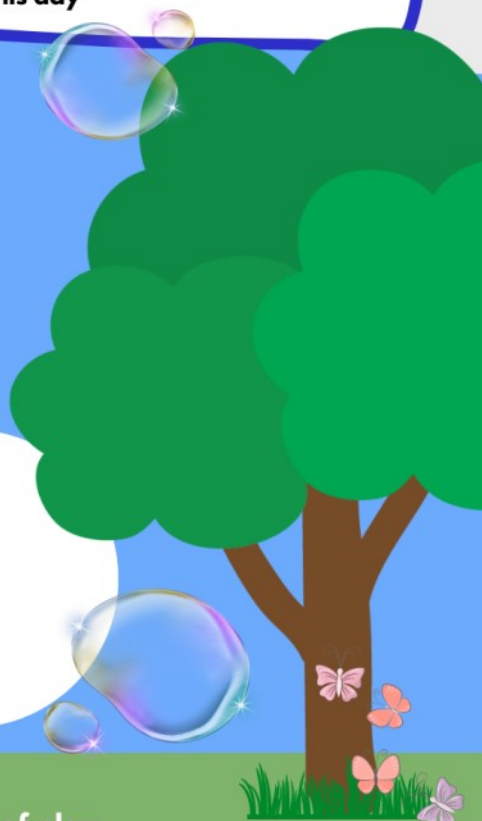
closest postcode GL8 8NN



///flies.gossiping.boasted

**Fridays 28th July & 1st September  
10am to 4pm**

Thank to Avening Parish Council and Avening Church of England  
Education Fun for funding this day



Our Play Ranger activities take place outdoors in all weathers and are open access. This means there is no registration, children are free to come & go as they please.

Under 7's are welcome and should be accompanied by a parent or carer.

We believe all children have the right to play. Please talk to us if your child needs additional support to enjoy Play Rangers. We welcome disabled children & their families.

### Play Gloucestershire

Transforming lives through the power of play  
[www.playgloucestershire.org.uk](http://www.playgloucestershire.org.uk)



@play\_glos



playgloucestershire



## *Things you need to know about Play Gloucestershire*

Play Gloucestershire - a registered charity - is the leading provider of free, outdoor, active play in the county. Our Play Rangers activities target 7 - 14 year olds. Under 7's are welcome and should be accompanied by a parent or carer. We love families to join us at all our sessions.

Our Play Ranger activities are open access. This means there is no registration – children can leave the site at any time. Our Play Rangers will not stop them and may not know that they have left.

We encourage children to take responsibilities for their own actions. We think this is good for them. They will be encouraged to resolve disagreements amongst themselves. We will intervene if absolutely necessary.

Play Gloucestershire believe that children need and want to take risks when they play. Our Play Rangers aim to respond to these needs by offering children stimulating, challenging environments for exploring and developing their abilities. In doing this, we aim to manage the level of risk so that children are not exposed to unacceptable risks. Our experience tells us that whilst children play outdoors they are likely to have accidents. If this causes concern please come along and speak to us about it.

All our activities are outdoors and include den building, fires, arts and crafts, sports and a range of playful games. We encourage children to play freely and choose what they do. They do not have to do anything if they don't want to. Children will get wet, hot, cold, smelly and dirty and need to wear appropriate clothing and footwear. Better to wear old play clothes than ruin your best!

Our Play Rangers will provide drinking water at all sessions. We promote healthy eating and sometimes will provide free fruit.

We believe all children have the right to play. Please talk to us if your child needs additional support to enjoy Play Rangers. We welcome disabled children & their families.

**For further information:**

**Visit us at [www.playgloucestershire.org.uk](http://www.playgloucestershire.org.uk)**

**Email [info@playgloucestershire.org.uk](mailto:info@playgloucestershire.org.uk)**

**Phone 01452 505548**

**Play Gloucestershire is a registered charity (1126562)**

# Avening Community Café

During August we especially invite families to come along to enjoy hot drinks and homemade goodies at the Café on Tuesday mornings in the Social Club from 9 – 12. Free drinks for children and newcomers – a warm welcome awaits - hope to see you there! Mobile Post Office also on site from 9:30 – 11:30.



On 27 June we celebrated the re-launch at Lechlade of the river boat “Neptune”, which has taken a special place in the Social Club car park during June and has been lovingly restored by Nick Winkfield. She now looks superb with newly painted hull and varnished woodwork.

Thanks to the WI for their popular bacon butties last month and also for displaying their fabulous crafted map of Italy made for their group WI Italian evening. We

hope it will be displayed again in August.

We couldn't resist celebrating World Chocolate Day in July – any excuse for chocolate cakes! Chocolate has an interesting history and some of our favourite chocs were first introduced over 150 years ago!

The Café entered team “Frothy Coffee” into the Social Club summer skittles competition from May to July. Around 20 of us took part over the 10 games and had some enjoyable evenings at the Social Club although unfortunately we lost most of our games.

There is no Café art session during August although the Art Club will still meet every Wednesday from 10 – 12 at Celia's – please ask at the Café if interested. Communal rag rugging takes place each week as normal and a further IT Help session with Tony Slater is arranged for Tues 15 Aug. The WI will be serving Bacon Butties again on Tues 8 Aug so please come along and enjoy!



*Communal rag rugging*

This years nominated Café charities will be The DOOR (who run our village Youth Club) and The LONG TABLE - please look out for the donation pot on the counter.

**John Hetterley, for Avening Community Cafe**



# AVENINGCINEMA CLUB



**Note: There is no Film Club in August.**

**The next film will be on Wednesday 27th September — title to be confirmed**

The film club runs on the last Wednesday of every month.

Contact us at [aveningcinemaclub@gmail.com](mailto:aveningcinemaclub@gmail.com)

The film club is a not for profit community event. Any profit made after screening/licence costs will be donated to local charities



## S Woodman Garden Services



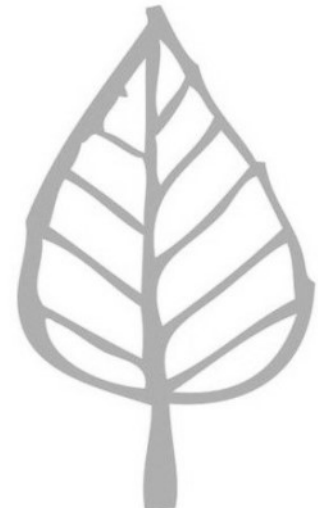
General Gardening  
Grass Cutting ~ Hedge Cutting  
Tree Cutting ~ Fruit Tree Pruning  
General Ground Clearance  
Good Rates / O.A.P Discount

Please Call: Home: 01453 834744 Mobile: 07814206803



**LIVIA**  
LANDSCAPES & GROUNDWORKS

- Fencing
- Patios
- Walling
- Driveways
- Foundations
- Drainage



t: 07961 735191

## Longfield Teams up with Local Solicitors



What happens to your home, possession and savings if you die without making a will? Many people assume that their spouse or partner will automatically inherit everything, but that's not necessarily the case. The laws of intestacy (where there is no legal will) will take over, and this may cause your loved ones severe financial and emotional distress.

It's not easy to talk about what happens when we die, but making a will can ease the burden on your family and friends when the time comes.

Longfield Community Hospice has teamed up with three local solicitors to offer a will-writing service during September. Rather than pay legal fees, for a donation of £90 for a single basic will, or £160 for a pair of basic 'mirror' wills, you can get expert advice and support to make a legal will. 100% of your donation will go to Longfield.



"We'd like to say a huge thank you to the solicitors for giving their time and expertise for free," said Louise Cook, Head of Fundraising and Marketing. "This generous gift will make a big impact; allowing us to care for more terminally ill people and their families when they need it the most."

"You don't have to leave a gift in your will to Longfield, but we'd be very grateful if you do. Legacies help to fund our Hospice at Home service, enabling people to die with dignity in the comfort of their own homes."

All appointments are offered on a first-come, first-served basis. Book your appointment for September and make your donation now as places are limited.

To find out more about the Write a Will scheme, visit [www.longfield.org.uk/write-a-will](http://www.longfield.org.uk/write-a-will) or call the team on 01453 886868.

## PETER SAVAGE

**ALL FENCING & GATES SUPPLIED & FITTED  
GROUNDWORKS AND LANDSCAPING UNDERTAKEN  
SEASONED FIREWOOD – LOGS & KINDLING**

**Tel: 01453 833239  
or 07785 788335**

# Puzzle Answers

M	O	U	S	E		P	L	A	I	C	E	
O			C			U		P		O		C
N	A	R	W	H	A	L		E	I	D	E	R
K			I			L		S				O
E		B	A	D	G	E	R		C	H	O	W
Y		E		N		T		M		E		S
	M	A	C	A	W		C	O	B	R	A	
S		R		S		J		L		O		C
T	U	S	K			M	A	R	L	I	N	O
O				A		C		U				L
R	O	B	I	N		K	E	S	T	R	E	L
K		E		T		A		K				I
	W	E	A	S	E	L		S	N	A	K	E

8	2	7	6	9	5	3	4	1
9	6	4	2	1	3	8	7	5
1	5	3	8	7	4	9	2	6
2	4	1	9	6	7	5	3	8
5	7	9	3	4	8	6	1	2
3	8	6	1	5	2	4	9	7
7	3	2	5	8	9	1	6	4
4	1	8	7	3	6	2	5	9
6	9	5	4	2	1	7	8	3



**JOINERY**  
LIMITED

- Windows
- Doors
- Conservatories
- Bifold Doors
- Stairs

01453 755007  
info@gkjoinery.com  
gkjoinery.com

## **O.L.Cottle** **Family Business**

**Hand Carved Memorials : Cremation Plaques**  
**Additional Inscriptions : Renovations and Cleaning**

**All Types of Stonework**

**Tel: 01453 762877**

**36 Slad Road, Stroud, Gloucestershire**

# Avening Parish Council



## Parish Council Grants

To enable the Parish Council to prepare the budget for financial year starting April 2024, the Council would like all grant applications to be submitted before October 31<sup>st</sup> 2023.

## Parish Council Vacancy

There remains a vacancy for a Parish Councillor. If you are interested in this role, please contact the Clerk for further information.

## Allotments

Requests have been received for allotments. The Parish Council do not own land. If you have a piece of land that you would be willing to rent to the Parish council for allotment use, please get in touch.

## Planning Applications & Tree Works Since the Last Issue and Parish Councils Decision New Planning Applications

23/00352/FUL: 3 Woodstock Lane – Demolition of existing dwelling and associated landscaping works.

### Cotswold District Council Decision Notices

23/00340/FUL: Chippings High Street - Erection of a side extension, addition of cladding, alterations to annex, and erection of oak framed carport. Permitted.

23/00552/FUL: 7 West End - Erection of rear single-storey extension, addition of rear dormer, vehicular access and associated works. Permitted.

23/00662/TPO: East Ruggers Wood Compartment East West End - Works as per East Ruggers Wood zone descriptors for management plan. Permitted.

23/00775/FUL: 11 Tetbury Hill - Erection of a two-storey rear extension . Permitted.

23/01297/TCONR: 15 Tetbury Hill - Mixed species (G1) - reduce the height of the trees to 10m above ground level to allow more light into the garden. No Objection

23/01766/TCONR: 2 Orchard Field - Cypress (T1) - Fell to allow more light into the garden and prevent potential damage to the dry-stone wall next to the trunk. Permitted

## Crime

Animal / Wildlife Crime – 1

Road Traffic Accident – damage only -1

Road related offence - 2

Neighbourhood Policing Team: PC Chris Pritchard; PCSO Edmund Maina

[101@gloucestershire.police.uk](mailto:101@gloucestershire.police.uk)

## Potholes

Report the potholes directly to Highways on 08000 514514 or at the GCC Report It website.

## Parish Council Meeting

The Parish Council will not be holding a meeting in August. Work will continue behind the scenes.

The next Parish Council meeting will be on 20<sup>th</sup> September

*Agendas and minutes can be viewed at [www.avening-pc.gov.uk](http://www.avening-pc.gov.uk)*

*The Parish Clerk can be contacted via email: [parishclerk@avening-pc.gov.uk](mailto:parishclerk@avening-pc.gov.uk)*



- Locally made, sustainable, Lumpwood BBQ Charcoal (local delivery possible)
- Woodland Weddings and other Family Celebrations
- Children's Laser Tag Parties

West Ruggers Green Woods, Shipton's Grave Lane, Avening

Contact Estelle St John-Smith – 07817 837781 [estjs01@rocketmail.com](mailto:estjs01@rocketmail.com)

## TETBURY GOODS SHED

ARTS CENTRE

### HIGHLIGHTS AT THE GOODS SHED FOR AUGUST

**August 13** **Romeo and Juliet:** Sun and Moon Theatre Group present Shakespeare's best loved comedy in a bold outdoor production. The story of the war-torn Montagues and Capulets has been updated to a feud between two family-run movie studios in the 1930s. 6pm Tickets £12.50

**August 16** **Music for Minatures:** This month's baby friendly concert features a Musical Circus with oboe, clarinet and piano for you and your baby to move to! 10.30- 11.15 Tickets £6 adults, £4 children Family of 4 £15

**August 18** **Fretless and Friends:** An evening of Jazz with easy listening music from the American song book and some shades of Swing and Latin interludes. 7pm. Tickets £15

**August 30** **Piano Club:** a chance to listen to beautiful music played by accomplished performers while eating tea and cake from our wonderful café! 2-4 Tickets £5

**For details of other events including cinema, afternoon concerts and talks please see our website, where you can also book tickets for all events**  
**[www.shed-arts.co.uk](http://www.shed-arts.co.uk)**

# Regular Activities in the Villages

Would organisers please let us know if there are any changes or additions to these events

Event	Day	Time	Where	Contact
Community Café	Tuesday	9.00am - 12.00pm	Social Club	Gill Adams 07826 291759
Mobile Post Office	Tuesday	9.30am - 11.30pm	Social Club car park	
Cherington PC	Tuesday bi-monthly	6.00pm	Cherington Village hall	Richard Smith 07884 265117
Line Dancing	Tuesday	8.00 - 9.30 pm	Social Club	Social Club 01453 833760
Avening Youth Club	Every Tuesday in term time	6.30 – 8.00pm	Avening Memorial Hall	01453 756745
Avening Churchyard tidy up	Wednesday	6.00 - 7.00pm	Holy Cross churchyard	Churchwardens
Avening Art Group	Wednesday	10.00 – 12.00	Avening Park Farm	Community Café
Avening PC	3rd Wednesday each month	7.30pm	Memorial Hall	Shani Baker 07415 039234
Avening Cinema Club	Last Wednesday each month	7.30pm	Memorial Hall	avening Cinemaclub@gmail.com
Avening church bell ringing	Wednesday	8.00- 9.00pm	Church bell tower	Andrew Lelliott Aslelliott37@gmail.com
Summer Skittles League	Thursday/Friday	evening	Social Club	
Avening W.I.	2nd Thursday each month	7.30pm	Social Club/ Memorial Hall	Liz 01453 833803
Charity Quiz	1st Saturday each month	8.00pm	The Bell	
Avening Singers	Sunday	4.00pm	tba	Derrick Pierce 01453 835090



## Get set for summer

Summer is here! What journeys do you have in mind? A holiday, a trip, a visit to distant friends or relatives? Then make sure your vehicle is up to the job.

### **Car travel check - £35.99**

For just £36 our trained technicians will give your car a Travel Check, so you can set out for your summer holiday knowing your vehicle is in the best possible condition.

We'll visually check all the essentials including tyres, lights and brakes, top up your oil and washer fluids and also test the battery and alternator.

### **Air Conditioning Recharge - £69.99**

Don't get hot under the collar when in traffic. For only £69.99 we will keep you cool by checking your system for any leaks and recharging the refrigerant and lubricant. We will also freshen up the atmosphere by eliminating any smells by disinfecting your air conditioning system including the air vents and vehicle interior.

**Call us or visit our website to book an appointment today**

**01453 832871**

[info@auto-bodytech.co.uk](mailto:info@auto-bodytech.co.uk)

[www.auto-bodytech.co.uk](http://www.auto-bodytech.co.uk)



Inchbrook Trading Estate, (A46) Bath Road, Nailsworth, Stroud, GL5 5EY

# The Bell at Avening

a traditional British pub serving a great selection of real ales and authentic Indian food



**OPENING TIMES:**  
MONDAY: CLOSED  
TUESDAY-THURSDAY: 5.00PM-CLOSE  
FRIDAY: 4PM-CLOSE  
SATURDAY & SUNDAY: 3PM-CLOSE  
FIRST SATURDAY OF EVERY MONTH  
IS TONY'S QUIZ NIGHT

*Little*  
**INDIA**  
at THE BELL

Little India @ The Bell, serving food from Tues-Sun 5.30pm-close  
Call **01453 836453** for great food to takeaway  
Visit our website for full menu



Call us on: **01453 836422** or e-mail us at [info@agpubs.co.uk](mailto:info@agpubs.co.uk)

[www.thebellavening.co.uk](http://www.thebellavening.co.uk)

Find us on Facebook  
by simply searching  
"Bell at Avening"



## Day Centre & Social Club

- Home cooked lunch plus teas/ coffees
- Group activities, craft sessions and companionship

## Home Care Services

- Help with Personal & Domestic tasks, Sitting Service
- Meals on Wheels locally

## Nursing Home

- General & Specialist Dementia Nursing
- Registered Nurses on duty 24 hours a day
- Free and Pre-arranged Respite Care available all year round



**Horsfall  
House**

For more information please  
contact us on **01453 731 227** for  
an Information Pack or go to:  
[www.horsfallhouse.co.uk](http://www.horsfallhouse.co.uk)

Patron: HRH The Princess Royal, Minchinhampton Centre for the Elderly, Registered Charity No: 287479