

The Villager

A Magazine for Avening, Cherington
and Nags Head



September 2019

editors@acvillager.co.uk

Fieldfare Café at Thistledown Farm



We're now open Wednesday to Sunday!

Our café is set in 75 acres of beautiful meadow and woodland overlooking Woodchester Park. We serve lunch from our wood-fired clay oven & charcoal BBQ Weds to Sun and brunch Sat & Sun. Fine teas, coffees & delicious homemade cakes served 9am to 4:30pm daily. Come up for an autumn walk and enjoy a hot drink with stunning views beside our woodburner!

You can join our mailing list for info on events such as vegan tapas, storytelling and foraging days. We stock delicious sourdough bread, Organic milk, our own preserves and more. Meats are free range and we use local and Organic produce wherever possible. Dogs are welcome on leads and we have baby changing and disabled facilities.

thistledown.org.uk 01453 860420 tinkley lane, nympsfield, GL103UH

September 2019

It seems that summer has flown past this year, with its remarkable variations in weather patterns. I was interested in an interview with farmers on the TV recently, who described this summer as a very wet one, which must be true when one considers the horrors that such places as Whaley Bridge endured and the deluges that we experienced here only a few of weeks ago. Yet we also have had some wonderful spells of beautiful weather. Will you remember this summer as fine or wet?

Now it is back to school with the excitements of the new term to look forward to, as we turn our thoughts to the approach of autumn and eventually winter. You will see that Ann Tarlton's article in this month's edition focuses on this, particularly as the autumn fruits, warmed by the period of fine weather, have appeared quite early and brought with them happy memories for her of times long ago.

We hope that you feel refreshed by the summer break and that you will enjoy this edition of the Villager.

The Villager Editors

The Villager Magazine

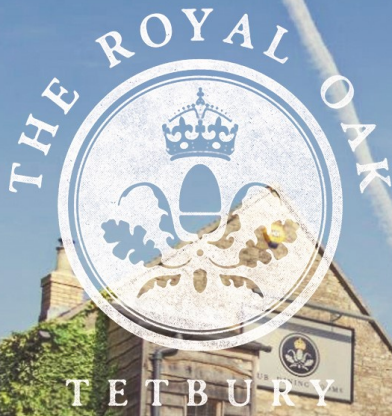
Editors	editors@acvillager.co.uk Jane Archer (07812 137161), Frances Conway (01453 832177) and Derrick Pierce (01453 835090).
Advertising	editors@acvillager.co.uk, Gwyneth Simpson 01453 836556
Deliveries	Cas Boddam-Whetham 01453 834834
Deadline	18th of each month

Photographs in The Villager Magazine

Many thanks to Kris Kerry for this photo, taken at night of Avening church floodlit in memory of her late father. Don't forget that anyone can ask to have the church floodlit for a special occasion.

If you have a photo of Avening or Cherington which you would like to share with us, please feel free to send it to us. You never know, it might turn up on the front cover...!

editors@acvillager.co.uk



Pub ~ Dining ~ Rooms ~ Events

OPEN

Mon - Thur: 11am - 11pm
 Fri - Sat: 11am - 11.30pm
 Sunday: 12pm - 11pm

LUNCH

Mon - Sat: 12pm - 2.30pm
 Sunday: 12pm - 5pm

WORKERS' POT

Mon - Fri: 5pm - 6.30pm

DINNER

Mon - Sat: 6.30pm - 9.30pm

**DOG
 FRIENDLY!**



THE ROYAL OAK TETBURY

Walkers, cyclists, explorers - welcome to The Royal Oak in Tetbury, an 18th century inn with a classic saloon bar, courtyard, gardens and stylish lodgings. Upcycled furnishings, cosy booths, a deco piano and a dining room in the rafters offer dining as well as private dining for gatherings and celebrations.

Cask Marque excellence is awarded for the great selection of guest ales including Stroud brewery. The seasonal menus showcase organic meat from local farms, sustainably sourced fish specials and with monthly Meat Free Monday events and a standalone vegan menu the choice is excellent for all.

With **six lovely en suite rooms** including the sensational Oak Lodge, and three dog-friendly rooms, The Royal Oak is a fun and relaxed getaway from which to browse the chic boutiques of Tetbury or explore the beautiful Cotswolds.

**1 CIRENCESTER RD. TETBURY GL8 8EY
 01666 500021 | THEROYALOAKTETBURY.CO.UK**

Regular Activities in Avening and Cherington

Please let us know if we have forgotten any regular event or if there is something you would like to have included here.

Event	Day	Time	Where	Contact
Line Dancing	Monday	7.30 - 9.30pm	Social Club	Social Club 01453 833760
Mobile Post Office	Monday and Thursday	12.00 to 1.00pm	opposite 65, Sunground	J. Clutterbuck 01453 542754
Community Cafe	Tuesday	9.00 - 11.30am	Social Club	
Churchyard tidy up	Tuesday	6.00 - 7.00pm	Holy Cross churchyard	Rev. Gerald 01453 834884
Cherington PC	Tuesday	6.00pm	Village Hall	Beverley 01453 832100
Bell Ringing	Tuesday	7.30 - 9.00pm	Church Bell Tower	Andrew 01453 835783
Line Dancing	Tuesday	8.00 - 10.00pm	Social Club	Social Club 01453 833760
Avening Youth Club	Every Tuesday in term time	6.00— 7.30pm	Memorial Hall	Rev. Gerald 01453 834884
Over 60s Lunch Club	1st Wednesday each month	12.30pm	Social Club	Christine 01453 833246
Avening Cinema Club	1st Wednesday each month	7.30pm	Memorial Hall	Katy 07806 614753
Avening W.I.	2nd Thursday each month	7.30pm	Memorial Hall	Maisie 01453 834679
Avening PC	3rd Thursday each month	7.30pm	Memorial Hall	Caroline 01285 380041
Summer Skittles	Friday	8.00pm	Social club	Derrick Ind 01453 835752
Charity Quiz	1st Saturday each month	8.00pm	The Bell	
Avening Angels Choir	Sunday	4.00pm	Various	Derrick Pierce 01453 835090

Contacts for the Villages

Avening and Cherington Priest	Revd. Gerald South	01453 834884
Avening & Cherington Churches Reader	Derrick Pierce	01453 835090
Avening & Cherington Cricket Club	Derrick Ind	01453 835752
Avening Angels	Derrick Pierce	01453 835090
Avening Art Group	Doreen Pierce	01453 835090
Avening Bell Tower Captain	Andrew Lelliott	01453 835783
Avening Church Churchwardens	Elizabeth Buchanan Elizabeth Fuller	01453 833016 01453 835067
Avening Church Flower Team	Doreen Pierce	01453 835090
Avening Church Organist	Colin Chambers	01666 880026
Avening Church PCC Treasurer	Ann Brick	01453 834311
Avening Cinema Club	Katy Upton	07806 614753.
Avening History Project	Jean Chatelain	01453 834713
Avening Memorial Hall		07583 073604
Avening Oil Coordinator	Frances Lindley	01453 835115
Avening Parish Council Clerk	Shani Baker	07415 039234
Avening Playgroup	Angie Heslop	01453 832695
Avening Primary School	Jane Rushton	01453 833191
Avening Silver Band	Jim Hill	01453 834438
Avening Social Club	Derrick Ind	01453 835752
Avening Youth Club	Revd. Gerald South The Door	01453 834884 01453 756745

Cherington Village Hall	Wendy Eldridge	01285 841327
Cherington Parish Council Clerk	Beverley Rymer	01453 832100
Cherington Church Churchwardens	John Bate-Williams Helen di Mauro	01666 503544 07796 937268
Cherington Church Flower Team	Elizabeth Workman	01285 841294
Cherington Church Organist	Elizabeth Workman	01285 841294
Cherington Church PCC Secretary	Elizabeth Workman	01285 841294
Cherington Church PCC Treasurer	Paul Cable	cabes50@yahoo.co.uk
Community Café	Jennie South	01453 834884
Cotswold District Councillor	Richard Morgan	
Friends of Avening School	Nicky Dill	01453 833191
Over 60s Lunch Club	Christine Howell	01453 833246
South Cotswold Community Wellbeing Agent		01452 528491
Stroud Hospital	Reception	0300 421 8080
Tetbury Hospital		01666 502336
Women's Institute	Gwyneth Simpson	01453 836556

VILLAGE & AREA WEB SITES

Avening Parish Council: www.avening-pc.gov

Avening Church: www.aveningchurch.info

Cherington Parish Council: cheringtonpc.org.uk.

Cherington Village: www.cheringtonvillage.co.uk

Cotswold District Council: www.cotswold.gov.uk

Letter From Avening Parish Council Leader



As a Parish Council team we sometimes want to do too much, and as a result we don't have enough time in our meetings to cover everything we want to. This means some projects and issues don't get sufficient air time and seem to take ages to progress. All very frustrating! Following a suggestion from Richard, we're going to have a look at the agenda to see if we can spread the regular (but dull and unproductive) items on a rota so we don't cover them in every meeting – this should free up valuable space to progress more projects and speed up decisions. We have also agreed to some delegated spending power so that progress on smaller items isn't held up having to wait for a full meeting to take place.

At the playing field you will see the resurfaced perimeter path making good progress, and if it hasn't started already when this is published, the new fence around the play equipment will be installed imminently.

I was very disappointed to be told about the damage to the zip wire and the swing basket. The latter has been repaired, but the zip wire will have to be completely replaced. Some of the cost may be covered by insurance, but it will still affect our ability to provide additional equipment. We have some good leads on the alleged vandals, and our PCSO will be knocking on doors to 'get help with her enquiries'. This is a small community, so there will always be someone who sees something and knows the people concerned, but **parents** – please be aware of what your children are doing! Ultimately there are only limited funds available, and if things keep being damaged we'll soon end up with an empty field.

In the hall we're hoping to reinstate the badminton court as we think this is a simple improvement which will increase sporting facilities in the village. We are also organising a first aid course on 5th October – contact the clerk if you are interested in attending either the morning or afternoon session.

We are suffering from a lot of Ash Die Back in the area, and I have noticed a number of dead and weakened trees – anyone old enough to remember the great storms of 1977 will remember the carnage caused when hundreds of Elm were blown down. This could easily happen again with Ash, so could all land owners please take advice from experts, and take them down if necessary. We have commissioned a survey of the woodland around the field, and recently prompted Gatcombe to fell a number of infected trees

behind the playgroup.

On the roads, the Nags Head Lane towards the golf club will be closed 16th – 29th, and the small lane opposite Rectory Lane will be closed for more wall works from 16th September to 25th October

On a personal note, I'm very much looking forward to my youngest daughter Emma's wedding in a few days; and becoming a grandfather soon after (hopefully) when Shelley welcomes her first child.

Tony Slater



YOUR Community ALERTS Gloucestershire



**Sign up today for local news and alerts in
your community.**



By registering today you will receive news and appeals, local crime information and crime prevention advice - directly to you.

Registering with us is completely free.



It will also help your local policing teams better police your neighbourhood.



www.yourcommunityalerts.co.uk



S Woodman Garden Services



General Gardening
Grass Cutting ~ Hedge Cutting
Tree Cutting ~ Fruit Tree Pruning
General Ground Clearance
Good Rates / O.A.P Discount

Please Call: Home: 01453 834744 Mobile: 07814206803

Avening and Cherington Churches



Borrowing and Saving – the Gloucestershire Credit Union

In 2013 the Archbishop of Canterbury (Justin Welby) criticised payday lenders, and charged credit unions to compete with the likes of Wonga. One outcome of his was the development of the Gloucestershire Credit Union.

Retired banker Geoff Shaw who is Chairman of the Board explains: “We are responsible lenders and help people from all walks of life, especially those who might otherwise be financially excluded – people like a single mum whose washing machine has broken down. We don’t lend into the debt spiral – only to people that we consider will both willing and able to repay. We are a non-profit co-operative, owned by the members, whose savings we lend out, much like a building society. The ethical element of credit unions is very important to me and to our members.”

Gloucestershire Credit Union is a community financial co-operative, helping anyone who lives and/or works in the county to build their financial security and better face the future.

It offers fair, flexible and responsible savings accounts and loans and because it is local, it can get to know its members, putting a friendly face on finance.

It operates just within Gloucestershire and, by saving or borrowing with the GCU, money will be doing good at the same time through supporting the local economy and helping other people within Gloucestershire’s communities.

Everyone who has a savings account or loan with Gloucestershire Credit Union becomes a member, and all members have a share of the organisation’s profit at the end of each financial year. They can even have a say in how the credit union is run.

Gloucestershire Credit Union offers a responsible, reliable alternative to the high street banks and similar bodies. All members’ savings are protected by the Financial Services’ Compensation Scheme.

To find out more about saving with or borrowing from GCU go to www.gloscreditunion.org.uk or phone 01452 422712.

Cherington Harvest Festival, 14th September, 6.00 pm

Avening Harvest Festival, 6th October, 11.00 am

Contributions to the Tetbury Foodbank would be particularly welcome. At the time of writing they are in need of these items: Tinned fish, Long-life milk,

Tinned vegetables, Biscuits, Instant mash/tinned potatoes, Rice pudding, Long-life sponge pudding, Long-life juice, Tinned fruit, Tinned tomatoes, Pasta, Teabags. However they have good stocks of: Beans, Sanitary products, Tinned meat. At Avening, flowers, vegetables etc for display may be brought to church at 9am on Saturday 5th.

Café Church, 29th September, 11.00 am at Avening Church

Do join us for informal conversation and worship over a cup of coffee.

From the Church Registers

3rd July: Funeral of William Yeoward (Cherington)

9th August: Funeral and Thanksgiving Service for Ray Gale (Avening)

12th August: Funeral of Sandra Best (Westerleigh Crematorium)

*Gerald South, Parish Priest for Avening and Cherington
01453 834884 gp.south@btopenworld.com*

Church Services and Events

<u>Sep</u>	Holy Cross Avening	St Nicholas Cherington
1 st	11.00 am Eucharist with Baptism	9.30 am Eucharist with Baptism
3 rd	12.30 am Praying the Parish	
8 th	8.00 am Eucharist 5.30 pm Evening Prayer	
14 th		6.00 pm Harvest Festival
15 th	11.00 am Eucharist	NO SERVICE
22 nd	11.00 am Eucharist	9.30 am Morning Prayer
29 th	8.00am Eucharist 11.00 am Café Church (Avening)	
Oct 6	11.00 am Harvest Festival	9.30 am Eucharist
13 th	8.00 am Eucharist 5.30 pm Evening Prayer	

Avening W.I.

WI campaigns are about changing things for the better and tackling the issues that matter to members. Every year members are asked for suggestions for future campaigns and this year one of our Avening members has suggested an important issue, which we have now sent as a resolution to the Gloucestershire Federation:

Stop PIP re-assessments for people with long term conditions which will not change over time.

Personal Independence Payment is a welfare benefit in the United Kingdom that is intended to help with the extra costs of living for those with a long-term health condition or a disability, and is a benefit for people who may need help with daily activities or getting around.

The new arrangements insist that people must be re-assessed regularly but this causes great distress and worry for the people who qualify for the benefit and their carers, especially if the person involved has a condition that has been diagnosed and will not change over time.

We need to campaign to stop these pointless re-assessments for long term conditions, to ensure that carers and their loved ones feel secure in the knowledge that they will receive the support they need, for as long as it is needed.

Having sent in our resolution, we were informed that another Gloucestershire WI had entered a similar one and it was suggested that we work together to give more weight to the subject. We therefore contacted Mitcheldean WI, who were pleased to join forces with us. We usually have a social meeting in August, so we invited Mitcheldean members to join us for skittles and a ploughman's lunch in the Social Centre. We all had a very enjoyable afternoon, much appreciated by our guests. We will now need to wait until later in the year to find out if our joint resolution has been shortlisted by the National Federation.

On Thursday 12th September at 7.30pm, Avening WI will hear an illustrated talk presented by Neil Medland entitled ***'Recollections of Five***



Years in the Choir of Westminster Abbeyand beyond'. As a former young chorister in the Abbey choir in the 1960s, Neil will provide an insight into life in that great place, essentially unchanged over the years, and for whom choristership has been no less than a life-changing experience. The English choral tradition is the envy of the world and the standards have never been higher at least in our Cathedrals and Abbeys. He will include how his time as an Abbey chorister has had an influence on his life which has led to many activities in the field of choral music. The talk will conclude with a pictorial guide of Westminster Abbey, but without the thousands of visitors who tour the Abbey every day. Anyone who would like to join us for the evening will be very welcome.

Helen Haiselden

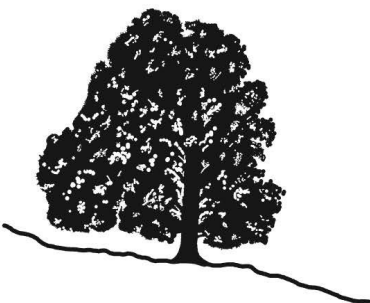
A Bite to Eat?

Arranging a Group Lunch, Christening other social event ?

Evening WI 'Bite to Eat' scheme may be able to assist with your catering needs. We can provide and serve a selection of freshly prepared sandwiches, scones, cakes etc; a fork or finger buffet; or a two course meal.



For prices and any further details phone Liz Knowles 01453 833803 or lizknowles@hotmail.co.uk



Fred Stevens Funeral Directors

We give immediate attention – 24 hours
Traditional and contemporary styled
funerals arranged
Individual, flexible approach
Well established, family-owned company with highly
experienced staff

Newmarket Road, Nailsworth, Gloucestershire GL6 0DQ
telephone 01453 832188
email@fredstevens.co.uk www.fredstevens.co.uk

Puzzle Corner

			5	6	7	1		4
				9	1	2		
1			4			5	8	6
	3				6			9
4	5						6	1
6			9				5	
8	2	3			9			5
		4	6	3				
9		5	2	8	4			

Answers on page 32

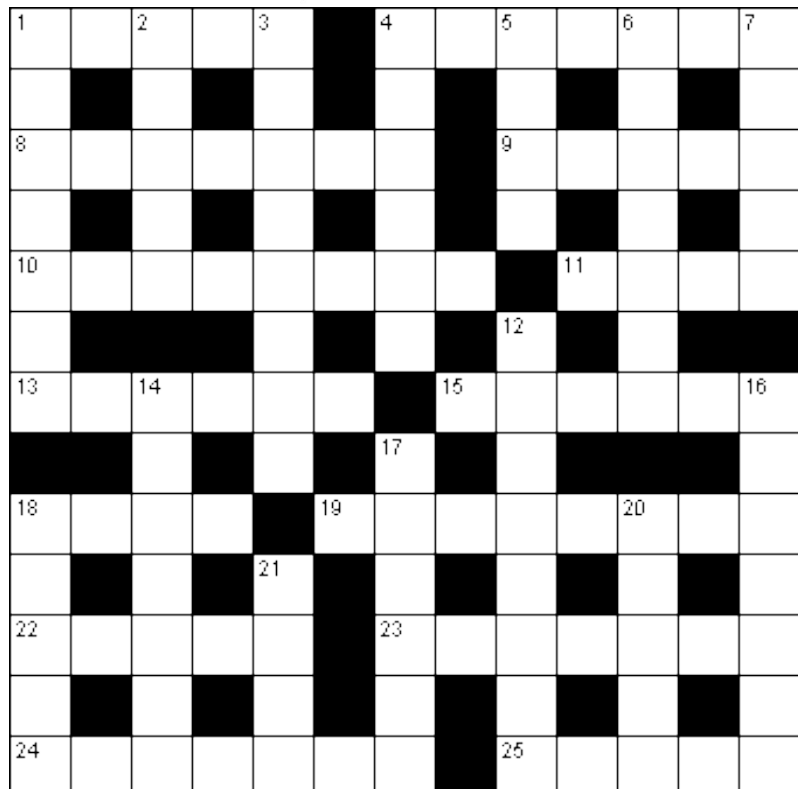
Sudoku

Fill in the blank squares so that each row, each column and each 3-by-3 block contain all of the digits 1 - 9. If you use logic you can solve the puzzle without guesswork.

© 2013 KrazyDad.com

Across

1. Direction (5)
4. Equilibrium (7)
8. Brass instrument (7)
9. Fruit (5)
10. Beamed (8)
11. Singing couple (4)
13. Kind of lake (6)
15. Movie house (6)
18. Large and scholarly book (4)
19. Precise (8)
22. Tooth (5)
23. Inactivity (7)
24. Family name (7)
25. Laconic (5)



<http://www.puzzlechoice.com>

Down

- | | | |
|---|-----------------------|------------------------------|
| 1. Notation cancelling a previous flat or sharp (7) | 5. Jump (4) | 17. In operation (6) |
| 2. A regular route (5) | 6. Planet (7) | 18. Domesticates (5) |
| 3. Seven-sided polygon (8) | 7. Choose by vote (5) | 20. Theatrical performer (5) |
| 4. Dairy product (6) | 12. Venomous (8) | 21. Song for solo voice (4) |
| | 14. Risk taker (7) | |
| | 16. Norm (7) | |

AVENING

BABY &
TODDLER

GROUP

MONDAYS 1.00 - 3.00 PM

STARTS 9TH SEPTEMBER - TERM TIME ONLY

AT AVENING PLAYGROUP

THE SUNGROUND, AVENING, GL8 8NW

INDOOR & OUTDOOR PLAY | STORY TIME |
SINGING/MUSICAL SESSION | DRINK & SNACK

The cost is £2.50 for an adult and child, plus £1 for each additional adult/child over 6 months.

For more information contact Katy Upton:

07806 614753

katywingrove@hotmail.co.uk

EVERYONE WELCOME!

The sessions are open to parents/carers and their preschool children aged 0-5. The sessions are run by DBS checked parent volunteers and children remain the responsibility of their parent/carer at all times.



Avening Playgroup

We have been getting ready to start the new term with a smarter playgroup building and have made good use of the time during the summer holiday to complete some much needed and overdue maintenance and repairs. The outside walls of the playgroup have been sanded down and a couple of coats of paint have been added.



Parents and members of the committee worked hard to clear the playroom floor of all the equipment and resources that were on it. We had to find room to store all the items, many of which were stored under tarpaulin in the under- cover area outside. The floor was then sanded, varnished and all the items were put back in place in time for the new term starting on Wednesday 4th September.

We greatly appreciate and thank:

- Everyone who gave up their time to help during the summer holiday;
- Everyone who has helped and supported the various fundraising events;
- The organisations who have donated money to the playgroup which has enabled us to complete the work;
- Most recently the Church of England Education Fund and the Mark Townsend Charitable Trust

We wish all the children who left playgroup in July all the best as they start their new adventure at 'big school' and look forward to welcoming the children, and their families, who are starting playgroup this month.

If you would like any more information about our lovely playgroup or to reserve a place for your child, please call us on 01453 832695 or email aveningplaygroup@gmail.com.



- Playgroup will start back on Wednesday 4th September.
- Toddler Group starts on Monday 9th September

The Annual General Meeting will be held on Tuesday 17th September

Angie Heslop

O.L.Cottle

Family Business

Hand Carved Memorials : Cremation Plaques
Additional Inscriptions : Renovations and Cleaning
All Types of Stonework
Tel: 01453 762877
36 Slad Road, Stroud, Gloucestershire

PETER JOY

Sales & Lettings

Sales

01453 833747 nailsworth@peterjoy.co.uk

Lettings and Management

01453 833847 lettings@peterjoy.co.uk

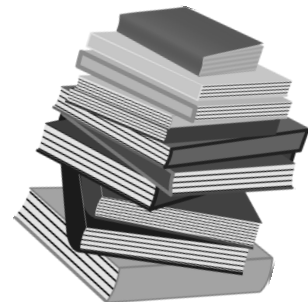
PROUD SUPPORTERS OF AVENING PLAYGROUP

Sandford Trust

Small grants are available from the Sandford Trust, a charity for local young people going on to university or work based training. I would welcome applications from anyone living in the parish of Avening, on or before 13th September, after which the annual distribution of funds will be made.

Applications should be made in writing, by the claimant, to:

Mrs Kelly Wilkinson
5 Pound Hill
Avening
Gloucestershire
GL8 8LZ



Wild about Avening

A few months ago as I stopped to look at the Avening Stream where it passes through Sandford Leaze, I was delighted by the sight of a Dipper, bobbing up and down on a midstream boulder. Described as a 'giant, barrel-chested wren with a gleaming white breast' this bird is easily recognisable, although not regularly observed, along our watercourses.



Dippers are a great indicator of water quality as they feed mainly on aquatic invertebrates (animals with no backbone) which only thrive in water of good quality. With a remarkable ability to walk underwater, against the current, Dippers search for mayfly nymphs, caddisfly larvae and small fish like minnows. They are able to see underwater thanks to a transparent third eyelid that is known as a 'nictitating membrane'. This is like having built in goggles!

These birds are monogamous, with pairs bonding for one or more breeding seasons. Nest sites are crevices in natural stone, walls or bridges. Eggs are laid between March and May and are incubated by the female for about 16 days. The young birds fledge (become able to fly) at around 20 days after hatching but spend another 11-18 days being fed by their parents until they become fully independent.

Dippers are on many of our local streams. I have since seen them in Nailsworth on the stream by the bus station. See if you can see one next time you are out.

Nature Notes

Lack of bird song: I always find this time of year a bit disconcerting as the birds fall silent and seemingly disappear. They are, however, still around but they are moulting. They are shedding the feathers worn out over the breeding season and replacing them with new, warm feathers for winter and during this time they are more vulnerable to predators so they keep silent and hide away.

Our garden hedgehog box is currently occupied by around 20 slow-worms! These brilliant reptiles look like snakes but are actually 'legless lizards' (no, not drunk!). If they are caught by a predator they are able to shed their tail which continues to twitch and distracts their predator while they make a quick exit!

If you have any interesting, local wildlife encounters then please let us know

and we will publish them in this feature.

Recycling Tips

The UK government estimate that we generate about 177 million tonnes of waste every year in England alone. There are several ways we can help reduce the amount of rubbish which ends up in local landfill.

- Please keep all of your empty crisp packets as well as any old toothbrushes, empty toothbrush tubes, toothbrush packaging etc, and drop them at Avening School. Last term we recycled several kilograms of crisp packets and toothbrushes saving them from the landfill and raising money for the school too.
- Tesco, Tetbury is recycling plastic bags (bread bags, frozen vegetable bags, any bag with 'Can be recycled with plastic bags' on it); pet food pouches; biscuit wrappers; and sweet wrappers. There is a container near the main doors.
- Tesco, Tetbury: Tetrapak and paper coffee cups can be recycled in the container in the Tesco carpark just after you turn in (before the zebra crossing)
- Pens: Any brand of pen, marker pen, highlighter pen and fluid correction pot can be dropped at the Avening community café on a Tuesday for recycling.

Phoebe Carter



FOREVER YOUNG OVER 60s LUNCH

1ST Wednesday of each month 12.30 start

Avening Social Club

Phone Chris Howell on 01453 833246 to book your
lunch

Main course, sweet and tea/coffee all for £6.00

A big thank you to all who have supported us in the past



Avening School

Start of term at Avening School

School term will begin on Wednesday 4th September, when all parents and carers of playgroup and school children are invited to come into the back of the church for tea and coffee, tissues, cake and chat.

For some, it will have been a difficult morning, for others a bit of a relief to be able to think to the end of a sentence.

Pop in any time from 8:30 after school drop-off, and let us cosset you. The coffee's great, and there will be toys on a carpet for younger children. From 8:30 til 10:30am.

Alex Adcock's article for the School will appear in our next issue, when she is confident that she will have a huge amount of exciting material to share with our readers.

You are invited to a Dementia Awareness Session Monday 16th September 7.30 pm Holy Cross Church

This evening is an opportunity to raise awareness and learn something more about dementia and the small ways we can all help and support people to live well in the community with dementia. The session will be friendly, fun and informative - an opportunity to learn some interesting facts about dementia and with time for questions. It will aim to help you to understand how someone with dementia might perceive the world and help you have a better understanding of why they might be doing and saying things we don't understand.

The evening will be led by John Colquhoun, a volunteer who has trained as a Dementia Friends Champion. 'Dementia Friends' is an Alzheimer's Society led initiative. It aims to increase dementia awareness and change the way we think, talk and act about dementia.

There will be refreshments on arrival at 7.30 pm and the session will start at 7.45 pm

No need to book – please just come!

Cas Boddam-Whetham and Jennie South
Pastoral Assistants - Avening and Cherington



Letters to the Editors

Dear Editors,

In your August issue, Gerald South expresses concern for the dearth of sporting opportunities for teenagers in Avening and Cherington. Yet we are fortunate to live in an environment that offers a whole host of sporting opportunities within a 20 minute bike ride's radius: for example, cricket, cycling, football, golf, riding, rugby and tennis. Many of our villagers are members of the Minchinhampton Sports Association, and a several of us help to run it. However, if Gerald wants to replicate Rochester Cathedral and offer golf in the Nave, I could unearth a few clubs from the garage!

Yours faithfully,

Roger Lindley

Carpet and Upholstery Cleaning Specialists

Barden Clean

- Ultra fast drying times
- Environmentally friendly
- Removes stains
- High temp – sterilises carpet
- Improves air quality
- Removes dust mites
- Fully insured

CALL NOW

Michael Denley

**01453 752893
07541 002 891**

www.bardenclean.co.uk



OSTEOPATHY & WELLBEING

Symptoms suitable for Osteopathic treatment:

Spinal pain (back & neck), Sciatica, Limb pain (arms & legs), Frozen shoulder, Sporting injuries, Headaches & Migraines, Stress related conditions, Antenatal care for pregnancy related problems, Neonatal care for unsettled babies.

Also available at The White Practice:

- . Medical herbalism & allergy therapy
- . Cognitive behavioural therapy (CBT)
- . Acupuncture
- . Relationship, bereavement & sex therapy counselling

ONLINE BOOKING AVAILABLE

www.thewhitepractice.co.uk

14 Market Street, Nailsworth, Glos, GL6 0BX
01453 832515



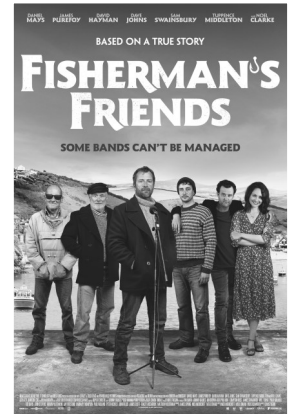
Avening Cinema Club

Thursday September 5th at 7.30pm, Avening Memorial Hall

Fisherman's Friends

Admission £5

Fisherman's Friends is a 2019 biographical comedy-drama directed by Chris Foggin from a screenplay by Nick Moorcroft, Meg Leonard and Piers Ashworth. The film is based on a true story about Port Isaac's Fisherman's Friends, a group of Cornish fishermen from Port Isaac who were signed by Universal Records and achieved a top 10 hit with their debut album of traditional sea shanties. The film stars an ensemble cast headed by Daniel Mays, James Purefoy and Tuppence Middleton.



The film club is a not for profit community event. Any profit made after screening/licence costs will be donated to local charities.

Please do check our Facebook page or contact Katy Upton for more information, and for the chance to vote on films.

Phone: 07806 614753. Email: katywingrove@hotmail.co.uk

NOTE THE DAY: **THURSDAY** SEPTEMBER 5TH

“Tea and Tissues”

Wednesday 4th September

8.30 to 10.30 am

*However you're feeling
after leaving your
youngster at school come*

for a cuppa up at the church.

Toys will be set out for younger children.





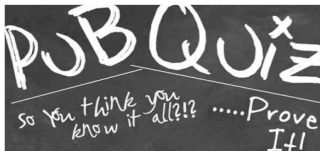
TOAD HALL
TRULL FARM
TETBURY
GL8 8SQ



Your own private room for lunches, dinners, drinks, receptions, childrens parties, business meetings, exhibitions, film nights. Large screen and internet.

Kitchen plus smaller room available. Outside or "inhouse" catering. A marquee could be added if required.

For Bookings and prices please contact :
Fi Mitchell
fimitchell06@btinternet.com
01285 841229 07885 094393



TONY'S CHARITY QUIZ NIGHTS

THE BELL, AVENING

1ST SATURDAY OF THE MONTH

£1 A PLAYER: A MAXIMUM OF 4 PLAYERS PER TEAM

ALL PROCEEDS TO THE COBALT APPEAL, CHELTENHAM

Do you have a mole problem?

With over 30 years experience in traditional mole control I can effectively, discreetly and humanely remove the culprit(s)! No gas, chemicals or poisons used and completely safe to children and pets.

No Mole – No Fee!

07766 132934 (Days) 01666 890344 (Evenings)
www.gbstateservices.com

Member of the British Traditional Molecatchers Register. Member of the Guild of British Molecatchers
BPCA/RSPH level 2 certificate in pest control. Fully insured and references available

Call now for a free, no obligation site survey and quote.

Riley Reminisces

The photograph on the cover of *The Villager* last month brought back memories of the forges that existed in Avening and the men that operated them.

The first forge I recall was in Star Lane and was an extension of the house where the family lived. It was owned and worked by a Mr Javez Powell in the early 1900s and continued until the late 1930s.

I am sure you have all heard or sung the Harvest hymn, "We plough the fields and scatter." Often the plough and agricultural machinery would be in need of repair and the horses that provided the power to draw them required shoeing from time to time and were one of the mainstays of that establishment. In later days Javez was succeeded by his son Fred who took over the business and many a time I was required to operate the bellows of the forge, with so many farms in the area (Church Farm, Star Farm, Longmans Barn Farm are but a few) providing work for the local "smithy", which was seldom silent.

The second forge was a larger establishment on New Inn Lane, now called The Bannut Tree. Whereas the first forge was operated by a blacksmith, the second one was operated by three brothers, Reuben, Frank and Charles Maller, who were known as 'Blacksmiths and Wheelwrights'. This meant that the firm could repair wooden wheels and manufacture new ones, requiring a great deal of skill.

I will endeavour to give you a short insight into the construction of a new wheel. First the hub was manufactured and a series of tenon joints created to accept the wheel spokes as required. The spokes were made and fitted to the hub. To obtain the circumference of the wheel, a series of radiused segments were made and were fitted, jointed and primed to complete the wheel. Wood was not particularly good for the wear and tear of the new wheels, so it was then prepared to have the tyre fitted. Unlike today, the tyre consisted of an iron/steel band manufactured to a slightly smaller size than the wooden wheel. A fire was lit and the ring of steel would be heated almost to red hot temperatures. With the aid of tongs the wheelwright dropped the ring (now expanded by heat) over the edges of the wheel. When in place it was doused with buckets of cold water to cool it and the resulting shrinking would hold the whole assembly in place. The work was intricate, hot and precise.

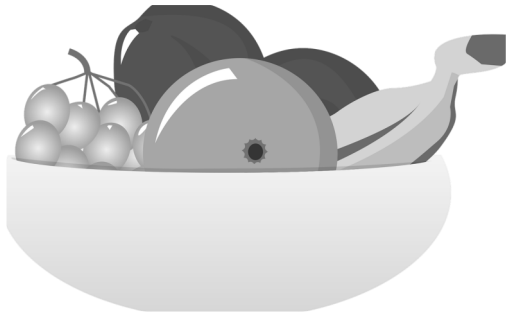
This type of work continued until WWI accelerated the use of the solid-tyred wheel and the coming of the pneumatic tyre fitted to the vehicles of today. Unfortunately most of the forges have not continued to this day but horse owners still employ the services of a mobile blacksmith.

Riley Vincent

Crop Swap at Avening Community Café

Some of the green-fingered Avening residents have been generously sharing their surplus seeds, seedlings and more recently, produce, with visitors to the Tuesday morning Community Cafe. When it comes to vegetables, and flowers, the exciting thing is that often the more you pick, the more they produce... nature is a truly wonderful thing!

Following the Green initiative of the cafe, the Crop Swap hopes to create a regular table overflowing with delicious, consumable, home produced fruit, veg, flowers, chutneys and jams - anything really that has been lovingly grown or made that is surplus to your requirements but that would be enjoyed by someone else. If you would like to contribute to the Crop Swap table please bring it to the cafe on Tuesday mornings, or if



you can't get there yourself we will try to arrange collection on the Monday night. Anything on the table is offered freely but donations into the Community Cafe 'Watering Can' will be gratefully received and given to a charity which will be announced at the cafe's birthday celebrations in November.

If you have any queries, ideas or comments please get in touch!

Chandra Rodgers

Green Christian On the Road Together Stroud

Sat. 28th September 10.30am till 4.30pm

Immaculate Conception Church Hall, Beeches Green GL5 4AA

Join Green Christian and local communities to deepen ecological discipleship, mobilise for change, and build common cause for creation. There will be sessions on two of our projects: **Joy in Enough** and the **Green Christian Way of Life** – and we have invited **Christian Climate Action** to take part in a Q & A.

The day is open to all who are interested in discovering how we might better pray, live, witness and support each other in this time of crisis.

Booking is essential as space is limited. For more details, visit greenchristian.eventbrite.co.uk or phone 0345 459 8460

Autumn Already?



Today, 8th August, I picked my first blackberry. Not very large but very sweet and judging by the amount of berries I saw, this promises to be a bumper season. All this took me back to many years ago when, as a little girl, my grandfather and I used to go for long walks across the fields. In those days we always seemed to have four proper seasons

and at no time can I remember ever picking blackberries in early August.

September was very much the beginning of Autumn which is when my grandparents used to come down from Scotland to stay with us in Berkshire and it's thanks to my grandfather that, on our long walks, not only did we pick lots of blackberries but he taught me the names of wild flowers, plants and birds. He was a fount of knowledge on anything to do with nature and wild life and living where we did we were surrounded by an amazing amount of open fields and woodlands, all bursting with life.

Not that we're devoid of wonderful sights and sounds of nature here - just the other day a family of half-grown hares suddenly got up in front of me, their long, pointed ears unmistakable even at their tender age.

The garden, too, has had its share of butterflies this year and it's all thanks not so much to my grandfather but to my lovely Geoffrey who, as a boy, used to collect butterflies and therefore taught me names like the colourful Red Admirals and Peacocks and the little brown Fritillaries that swarm all over the lavender bushes. But, best of all - and Geoffrey would have been overjoyed to see them - are the beautiful Cotswold Blues. Not at all common but this year seems to have brought them back to our gardens.

So, in spite of our rather mixed-up weather patterns, nature just gets on with what nature does best. Gives us all a bit of normality to keep us going and long may she continue to do so.



STEVE FLOYD PEST CONTROL ERADICATION & PREVENTION

E: stevefloydpestcontrol@gmail.com
Www.stevefloydpestcontrol.co.uk
Fully Qualified (25 years experience)
Fully Insured

T: 01285 643750
M 07933 357373



dental
practice

townes
townes
associates

Family Dentistry You Can Rely On



www.familysmile.co.uk

Satisfaction rating:
more than 99%

100% of patients
asked would
recommend
us to family
& friends

Quote 'Villager' for a 50% discount on a full New Patient Examination
with x-rays for just £39.50. Telephone us on **01453 827474**



**Manufacturers of purpose made
joinery of all types**

Tel: 01453 885075

Email gkjoinery@googlemail.com www.gkjoinery.com

**Traditional
Acupuncture**

Holistic Massage

With Paloma Sparrow
At the White Practice,
Market Street,
Nailsworth

& St Luke's Therapy
Centre, Cainscross
Road, Stroud

Dove Therapies



**Supporting health
through life**

Free 20 minute
consultation - in
person or by phone

For more
information or to
book an
appointment

07528 374 002

hello@dovetherapies.co.uk
www.dovetherapies.co.uk

Avening Community Café

Success with the Big Screen – A Seaside Special – September Look-Ahead

What a summer! We laughed, we cried*...we celebrated, we worked hard....we made new friends, we tried new ventures....and that was just at our first Movie Matinee and Popcorn Picnic. The Tuesday Cafés in August were no less entertaining with the start of our summer-long produce swap, the first teenagers joining our volunteer teams, a fabulous story-time courtesy of Alex Adcock and to round it all off, a Seaside Special Café with absolutely no need to be 'beach body ready'!

Our first collaboration with the Avening Cinema Club was a sell-out - and a great success. Over 60 people came along to a screening of *The Greatest Showman* at the Memorial Hall, with free popcorn, pick 'n' mix sweets, and a picnic thrown in for good measure: all the ingredients needed for a top-notch matinee performance (Hugh Jackman didn't disappoint either). We are already talking about a second collaboration with the Cinema Club, so watch this space!



At the beginning of the month we received the very welcome news from Councillor Richard Morgan that Cotswold District Council had awarded us a small grant to run one-off Cafés (including the Movie Matinee) over the coming year to ensure that we can work even harder for everyone who lives in Avening, Nags Head and Cherington. A Saturday pop-up Café and a Quiet Café for people who prefer a calm environment

(particularly those with mental health issues and their carers) are being planned for later in the year and we continue to welcome good ideas.

As well as these special events, we continue to expand the regular features at the Café. Every week customers can now take their pick from produce grown by Avening's gardeners, bring a range of waste products for recycling (including crisp packets, toothpaste tubes and packaging, batteries and biro's), and pick up a book – as well as enjoying a decent cuppa, home-baked cakes and the chance to chat to neighbours and friends. In September Atlanta Rayner is repeating her popular and well-regarded Writing for Fun session and we're running our second Community Sweepstake for the Rugby World Cup. Our regular Knit and Natter get-together and a big book swap bonanza are planned for September 10th and



best of all our bakers are going to town with free cupcakes on September 3rd to celebrate the end of the holidays.

So many people worked so hard over the summer to make sure our Café was a great place for all those on school holidays as well as for our wonderful regular customers that it is impossible to mention everyone here. But perhaps it is

appropriate, as the holidays draw to a close, to mention our four teenage volunteers: Lola Rayner, Izzy Neville (visiting from Abergavenny), and Tom and Anna Chappell. They were simply brilliant, we loved working with them and we hope to see them behind the counter again sometime!

*I blame the menopause

Clare Bebbington

Follow us on Facebook (Avening Community Café) to keep up with everything going on at the Café – and don't forget we serve great coffee and home-baked cakes too!

NAILSWORTH ACCOUNTANCY

ACCOUNTANCY SERVICES FOR SELF EMPLOYED AND LIMITED COMPANIES

Self-Assessment Tax Returns
Accounts Preparation For Small Businesses
Company Accounts
Business Start Ups & Company Formations
VAT Returns and Tax Planning

For a competitive quote telephone Emma

01453 835050

TOWN HALL NAILSWORTH



Avening Youth Club



Welcome back after the holidays! Our September theme is Transition

10th September: Future/past- with the new school year starting we will get together and talk about what you hope for in the new year and what will change from last year.

17th September: Friendship bracelets- show our support and friendship for each other by making friendship bracelets together.

24th September: Sports day- we will be running a range of sporty activities and competitions and make predictions for current sporting events e.g. the football.

Check out the Facebook Page

Youth Club is for anyone aged 8 to 14, from Avening, Nags Head, or Cherington. We meet every Tuesday in term time from 6 to 7.30 pm at the Memorial Hall. Once you're 13 we'll ask you to be a Young Leader and help out (don't worry, we'll give you training).

Cost is just £1 a time to include a healthy snack. Just come along and see what's what if you haven't been before.

For parents or carers:

The Youth Club is run by The Door (find their website at www.thedoor.org.uk). They provide qualified and experienced Youth Workers. You just need to leave an emergency contact number when you drop your young person off. If they come on their own, we need them to give us a number to contact.

Want more information? Contact Rev Gerald South on 834884 or John at The Door on 01453 756745.

Youth Club is for anyone aged 8 to 14, from Avening, Nags Head, or Cherington. We meet every Tuesday in term time from 6 to 7.30 pm at the Memorial Hall.



Nailsworth Domestic Appliance Repairs

A reliable, fast & friendly service

Washing Machines,

Dishwashers,

Tumble Dryers,

Fridge-Freezers,

Electric Cookers . . .

No Call - out Charge

01453 ~ 833310

COACHING

Are you facing challenges? Are you stuck, repeating the same old behaviour patterns? Would you like to see huge changes in your life either at work or at home?

Be the best version of you – gain clarity, take action and see positive results.

Contact: Emma Clout MSc - Coaching Psychologist

emsclout@gmail.com / 07555 677955

Puzzle Corner Answers

3	8	2	5	6	7	1	9	4
5	4	6	8	9	1	2	3	7
1	9	7	4	2	3	5	8	6
2	3	8	1	5	6	4	7	9
4	5	9	3	7	2	8	6	1
6	7	1	9	4	8	3	5	2
8	2	3	7	1	9	6	4	5
7	1	4	6	3	5	9	2	8
9	6	5	2	8	4	7	1	3

N	O	R	T	H		B	A	L	A	N	C	E	
A		O		E		U		E		E		L	
T	R	U	M	P	E	T		A	P	P	L	E	
U		N		T		T		P		T		C	
R	A	D	I	A	T	E	D		D	U	E	T	
A				G		R		V		N			
L	A	G	O	O	N		C	I	N	E	M	A	
		A		N		A		R				V	
T	O	M	E			A	C	C	U	R	A	T	E
A		B		A		T		L		C		R	
M	O	L	A	R			I	N	E	R	T	I	A
E		E		I		V		N		O		G	
S	U	R	N	A	M	E			T	E	R	S	E



NAILSWORTH
George Street
Tel: 01453 705560

NOW OPEN
Including Saturday 2- 4pm



TETBURY
23 Church Street
Tel: 01666
503531



georgevetgroup.co.uk

PETER SAVAGE

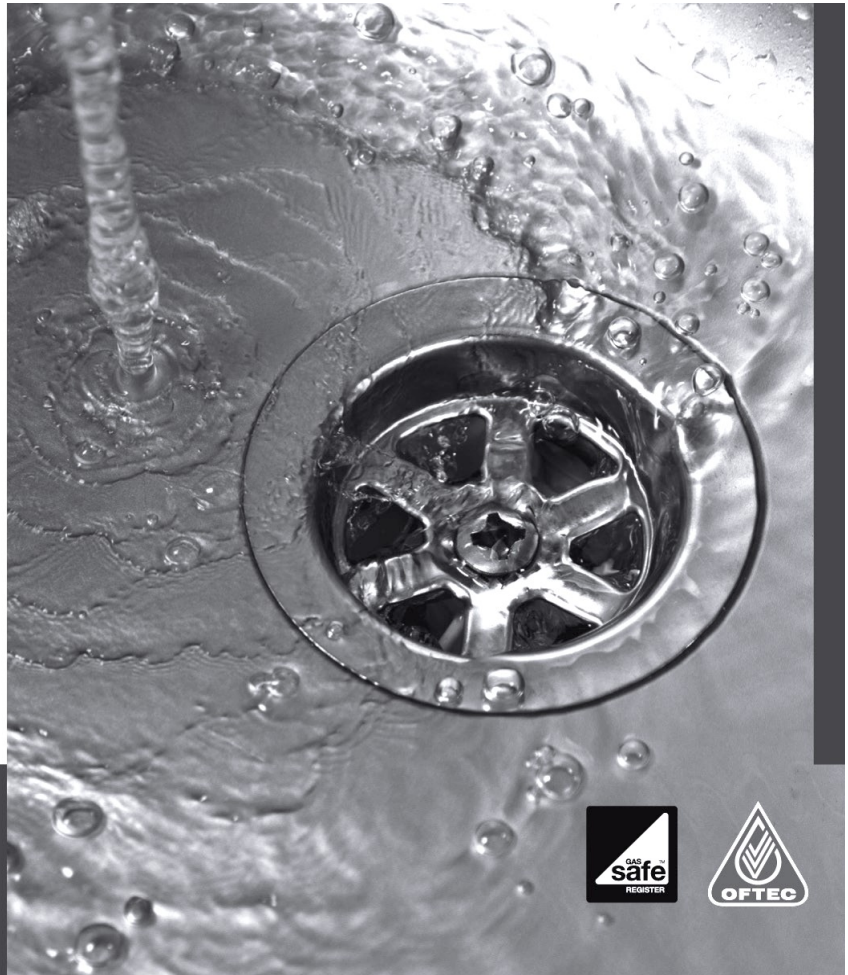
**ALL FENCING & GATES SUPPLIED & FITTED
GROUNDWORKS AND LANDSCAPING UNDERTAKEN
SEASONED FIREWOOD – LOGS & KINDLING**

**Tel: 01453 833239
or 07785 788335**



**Plumbing
& Heating**
(Cotswold) Ltd

- Oftec and Gas safe registered
- Boiler replacements
- New build and renovations
- Heating updates and alterations
- Underfloor heating
- Bathrooms
- Water softeners
- Over 35 yrs experience
- Tetbury based



Clive Alley t: 07584414624
Scott Wilkins t: 07717750247
e: scott@awplumb.co.uk
www.awplumb.co.uk



Dying without a Will. Now that's a real tragedy.

No-one likes the thought of dying, so it's hardly surprising that almost 3 out of 5 UK adults don't have a valid Will (*source: www.unbiased.co.uk 2010*). Yet having one is one of the most important arrangements you can make during your lifetime.

My name is David Martin. I live in Nailsworth and I'm the local consultant for *Steele Rose & Co* - one of the UK's Premier Professional Home Visit Will Writers. After 22 years serving my country in the RAF, I have spent the last 28 years of my life professionally advising my clients on all personal financial matters and specialising in Wills.

Writing a Will is easier and cheaper than you think. It also ensures that your wishes are carried out simply and efficiently - causing the minimum of anguish for those you leave behind. If you would like to discuss your Will arrangements, redraft an existing Will, Lasting Powers of Attorney, or other associated legal services, at a mutually convenient time in the comfort and privacy of your own home, please contact me:



David Martin

**David Martin, local consultant,
Steele Rose & Co**
(Nailsworth & surrounding areas)
01453 836699 (M) 07973 405997

Email: dcmartin@hotmail.co.uk
www.steelerose.co.uk

Members of the Society of Will Writers



Avening Parish Council



Parish Council Vacancy

There is still a Parish Council vacancy. This is a great way to get involved in the community. If you are interested in becoming a Parish Councillor, please contact the Clerk or a current member of the Council for more information.

Playing Field

The Planning application has been submitted and the Council are in discussions with the planners. Work has started on the footpath improvements, and the fence around the play equipment will start imminently.

Vandalism

Several items at the playing field have been vandalised. The Police have been informed. If you have any information on this, please speak to a member of the Parish Council in confidence, or call the police on 101. Parents please have a talk with your children and teens. The equipment is very expensive and if damaged the Council will not be able to replace it.

Crime

2 crimes reported in July. 1 Theft and 1 Violence.

Avening Film Club

It was reported that the matinee film was very well attended, and the children behaved beautifully. A big thank you to the organisers.

First Aid Course

We are arranging a first aid course on Saturday 5th October – there will be a morning and afternoon session – numbers will be limited, so watch out for further details and contact the clerk if you would like to attend.

Roadworks

Lots of roadworks in the area and white lines haven't yet been reinstated. Take care! On a positive note we have been informed that Star Lane has been scheduled to be resurfaced later this year.

Planning

18/04043/FUL Barn, Owl House, West End – Convert barn to create one dwelling. Object due to lack of detail around foul water disposal; public bridleway not shown; and concerns over impact to the adjoining stream during the build.

19/02851/FUL - Minchinhampton Golf Club Avening Stroud Gloucestershire GL6 9BE - Proposed Electrical Cubicle. No objections, but requested landscaping to camouflage the building.

Next Meeting

The next meeting is 19 September 2019. To view the minutes and agenda go to www.avening-pc.gov.uk

The Parish Clerk can be contacted via email: parishclerk@avening-pc.gov.uk

Church Floodlighting



The church will be floodlit on 30th September in memory of **Michael Powell** who captured England's green and pleasant land on celluloid, we celebrate the humanity in his films.

Thelma, Kevin and Columba.

The church looks beautiful at night when floodlit. If you would like to have this in memory of a loved one, or to celebrate a special event, contact: **Paul Brown 01453 835 983.**

**BELL
HOUSE**
Dental Practice

- **Dentistry for all the Family**
- **Private and Denplan**
- **Cosmetic treatment**
- **Tooth whitening**
- **Hygienist**

 **Denplan**
At the heart of dental care



Robert W. Carter B.D.S.
7 New Church Street . Tetbury . Gloucestershire . GL8 8DS
Telephone (01666) 503788

0100315

What is U3A?

The University of the Third Age (U3A) is a nationwide organisation based on local groups providing opportunities for retired and semi-retired people to come together and develop their interests.

We're not a university in the traditional sense. We don't study for qualifications. We just enjoy taking part and meeting people.

What do we mean by the third age? It's the time after you have finished working or raising a family, following your first age of childhood dependence and your second age of full-time work or parental responsibility. This is when you can pursue your interests at leisure and really make the most of life.

It's all voluntary – members share their knowledge and experience with others in interest groups, running informal activity sessions covering a wide range of subjects and activities.

There are learning opportunities, outdoor pursuits, social events and outings on offer at a typical U3A, including anything from bridge to gardening to theatre trips.

We have more than 950 U3As throughout the UK with more than 350,000 members, and we're growing fast!



Please join us: ¶
Avening Church ¶
Friday 27th Sept from 10.30 a.m. ¶
Enjoy coffee and cake and help
to raise money for Macmillan. ¶
Further details: ¶
Jennie South 01453 834884 ¶



Organised in aid of Macmillan Cancer Support, registered charity in England and Wales (261017), Scotland (SC039907) and the Isle of Man (604). Also operating in Northern Ireland.

**WORLD'S BIGGEST
COFFEE
MORNING**

**MACMILLAN
CANCER SUPPORT**



18 SEPTEMBER

Sandie Cox ARPS, DPAGB, the well-known wild life photographer, will present her work under the title "How to take Wild Life Photograph. This event will be "members only" at the Goods Shed in Tetbury on 18 September at 10.00 am for a 10.30 start, admission free, but bring your Membership card! Or bring cash or cheque and join on the door!

MEMBERSHIP FORM:

www.tetburyu3a.org.uk

OR CONTACT: membership@tetburyu3a.org.uk

OR

pick up one from Tetbury Town Council reception



Queen Matilda Country Inn



Real Ale Real Food Real Fires

Open Tuesday to Sunday

Bed and Breakfast rooms now available

Quiz Night last Thursday every month

Two for one Fish and Chips on Thursday

Star Lane, Avening, Glos, GL8 8NT Telephone 01453 350305

Website: queenmatildatavern.co.uk

Dates For Your Diary

Wednesday 4th September	Start of Term for Avening School and Playgroup	School and Playgroup (Tea, coffee and chat in the church after drop-off)	
Thursday 5th September	Avening Cinema Club Film showing Fishermen's Friends	Avening Memorial Hall	7.30pm
Monday 9th September	Start of Term for Toddler Group	Toddler Group	
Tuesday 10th September	Cherington Parish Council Meeting	Cherington Village Hall	6.00pm
Saturday 14th September	Cherington Harvest Festival	Cherington Church	6.00 pm
Monday 16th September	Dementia Awareness Session	Holy Cross Church Avening	7.30pm
Tuesday 17th September	Avening Playgroup AGM		tbc
Thursday 19th September	Avening Parish Council Meeting	Avening Memorial Hall	7.30pm
Saturday 28th September	Green Christians on the Road Together	Immaculate Conception Church Hall, Beeches Green, Stroud	10.30am– 4.30pm
Sunday 6th October	Avening Harvest festival	Avening Church	11.00 am

Cherington Parish Council

Next Parish Council Meeting

This will be held on **Tuesday 10th September at 6pm** in the Village Hall. An agenda will be placed on the notice board and cheringtonpc.org.uk. The Parish Clerk can be contacted on 01453 832100 or via email at cheringtonparishcouncil@yahoo.co.uk.

£20 OFF Your Next Service

Just hand this voucher to one of our friendly team members

**PLUS
£5**
donation to
Avening School
with your service
when you hand in
this voucher



- All Makes and models
- Dealer level diagnostics and servicing
- Free no obligation estimates
- local free pick-ups

for free, friendly, local advice give us a call

01453 832871

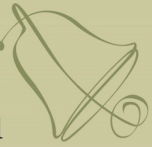
info@service-tech.org.uk
www.service-tech.org.uk



Inchbrook Trading Estate, (A46) Bath Road, Nailsworth, Stroud, GL5 5EY

The Bell at Avening

a traditional British pub serving a great selection of real ales and food



OPENING TIMES:
MON - FRI: 5:30PM - CLOSE
SAT & SUN: ALL DAY FROM 12 NOON

LIVE MUSIC EVERY MONTH

FIRST SATURDAY OF EVERY MONTH IS
QUIZ NIGHT

Little
INDIA
at THE BELL

Little India @ The Bell, serving food from Tues-Sun 5pm-11pm
Call **01453 836453** for great food to eat in or takeaway
Visit our website for full menu

Call us on: **01453 836422** or e-mail us at **info@agpubs.co.uk**

www.thebellavening.co.uk

Find us on Facebook
by simply searching
"Bell at Avening"



London Road
Tetbury
GL8 8SG

Come and visit us for Breakfast, Morning
Coffee, Lunch, Afternoon Tea, Dinner, and
Sunday Roasts

Plenty of parking and dogs welcome

Opening Hours

Tuesday - Saturday 9am – 5pm

Friday & Saturday evenings dinner from 7pm

Sunday Lunch 12 – 3pm

(Closed on Mondays)

For more information please call

01666 502206 or visit www.thetroublehouse.co.uk

